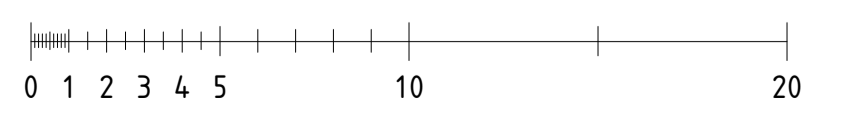
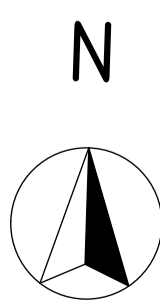


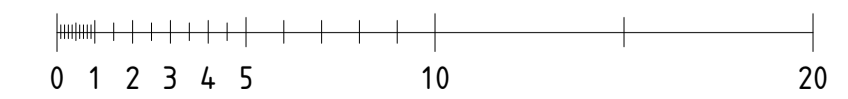
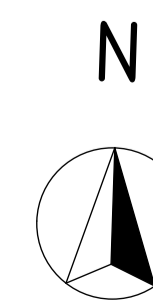
PLAN 09, GATUENTRÉ
1:200

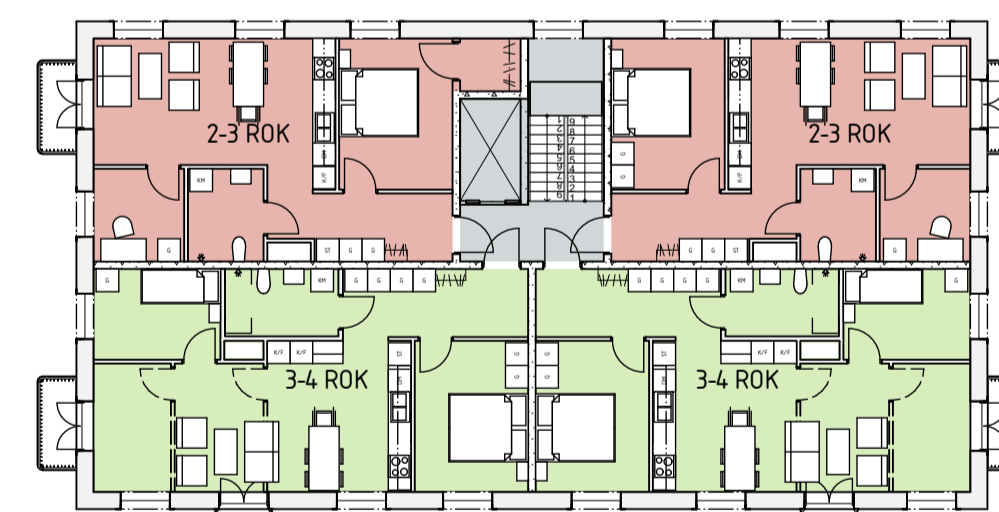
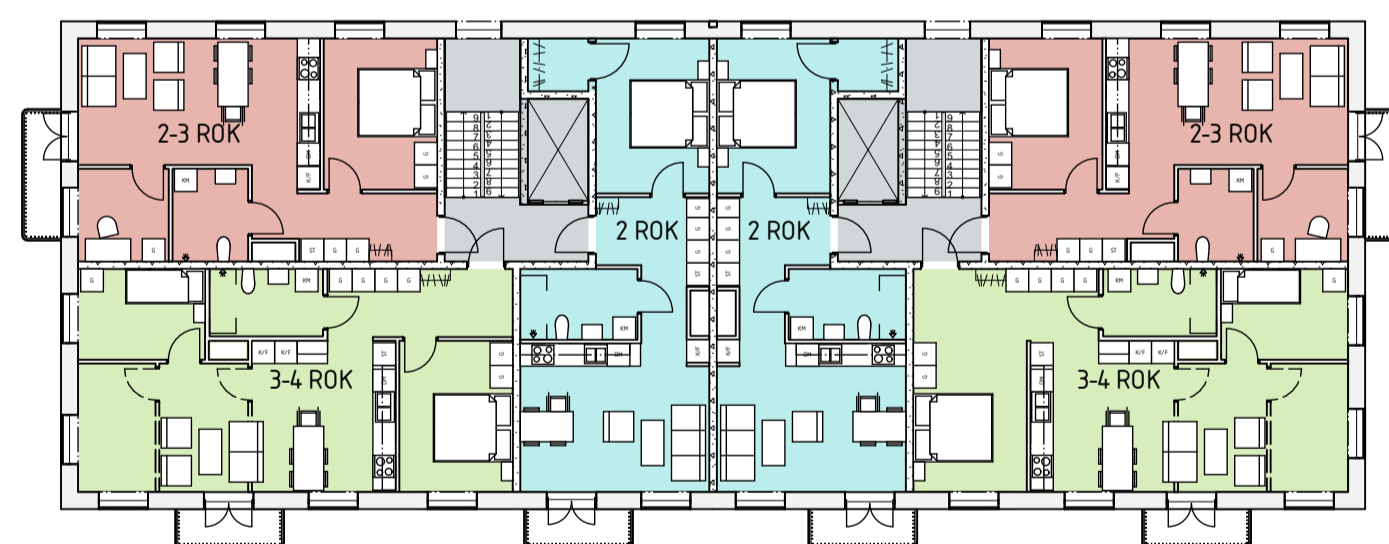
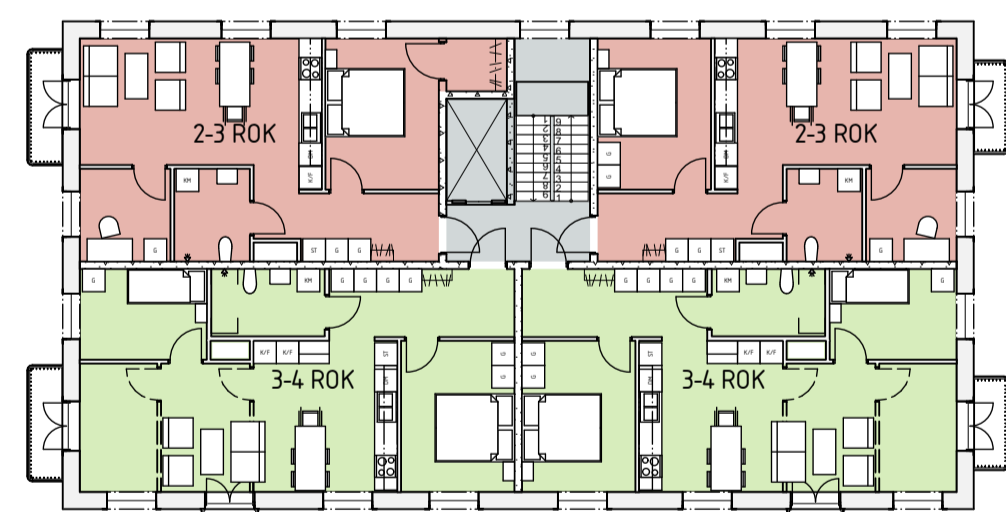
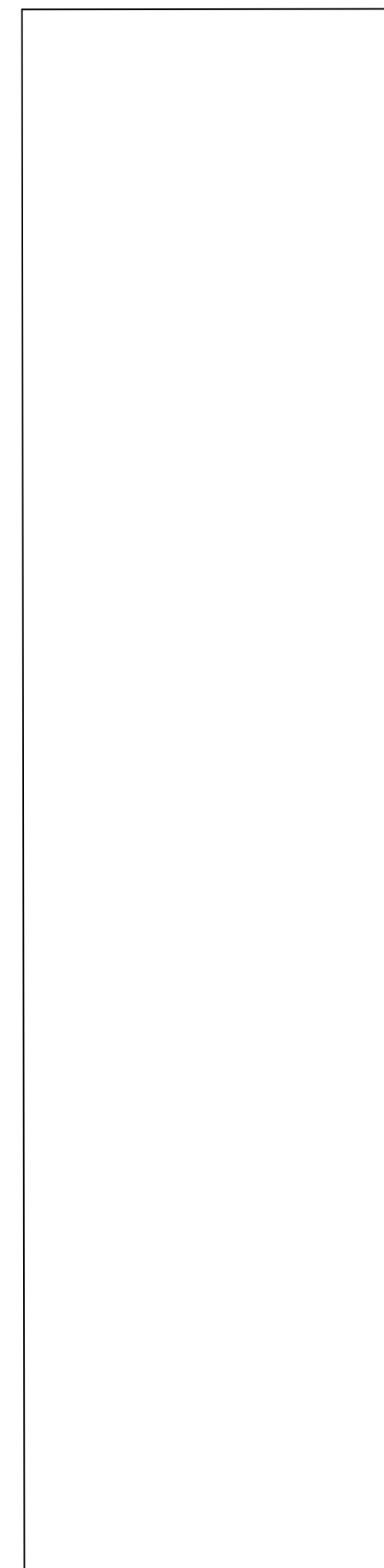
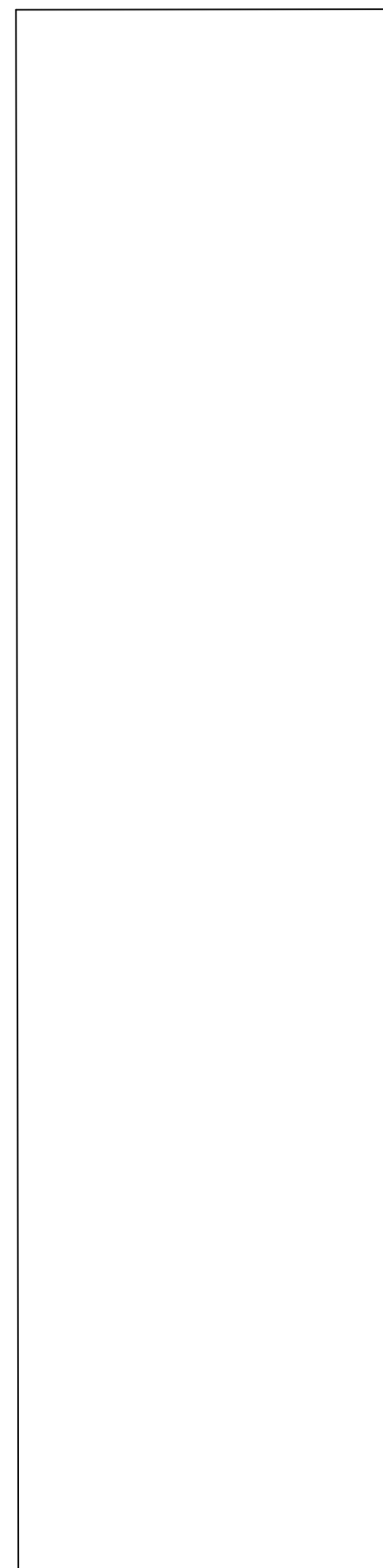
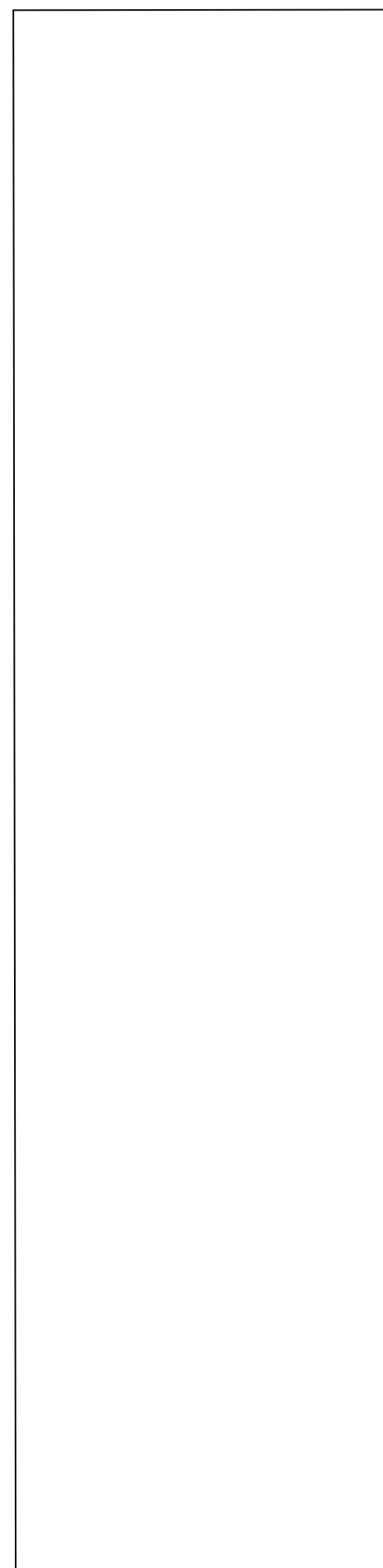
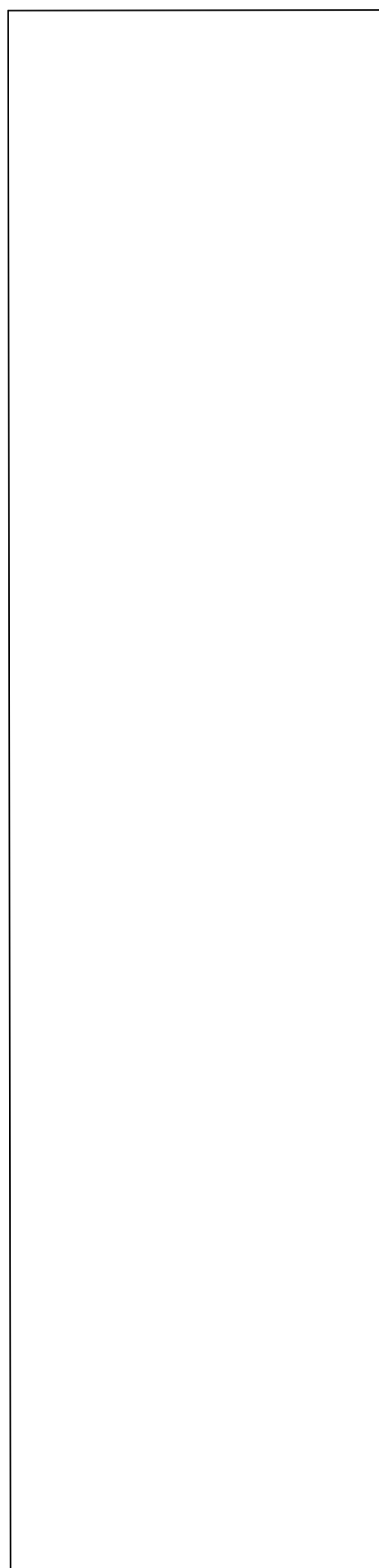


Inkom till Stockholms stadsbyggnadskontor - 2019-04-16, Dnr 2017-00513

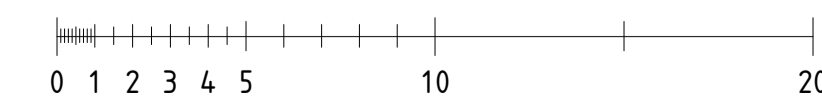
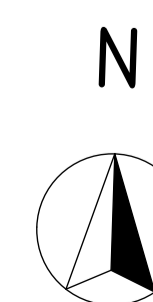


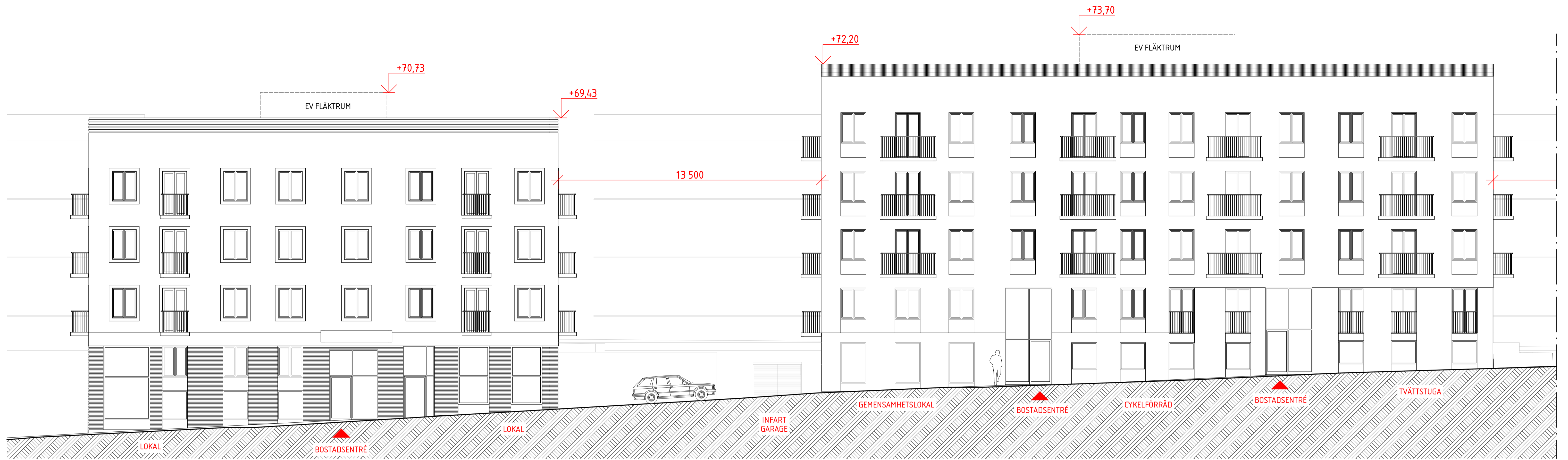
PLAN 10, GÅRDSENTRÉ
1:200



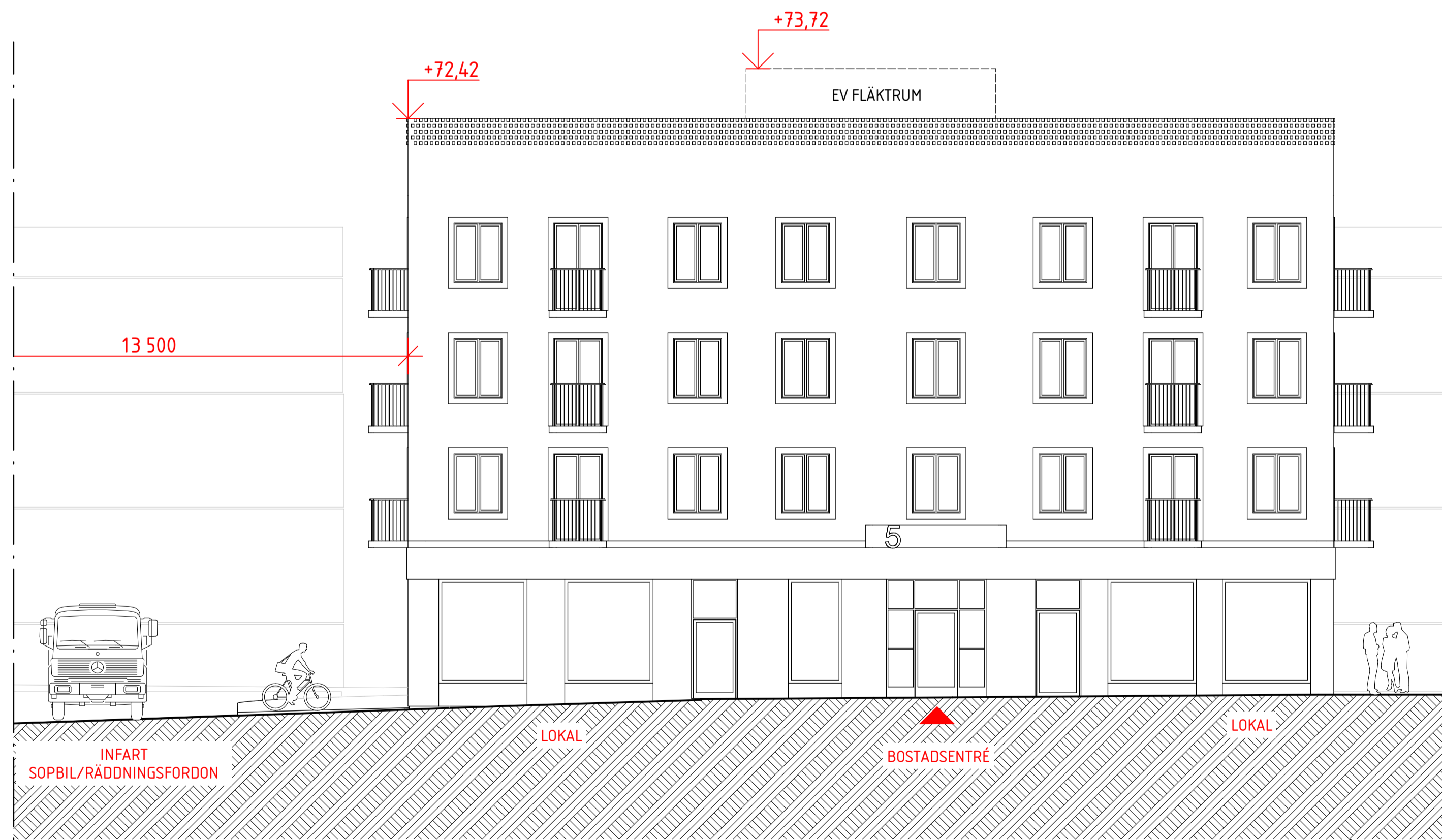


PLAN 11, NORMALPLAN
1:200

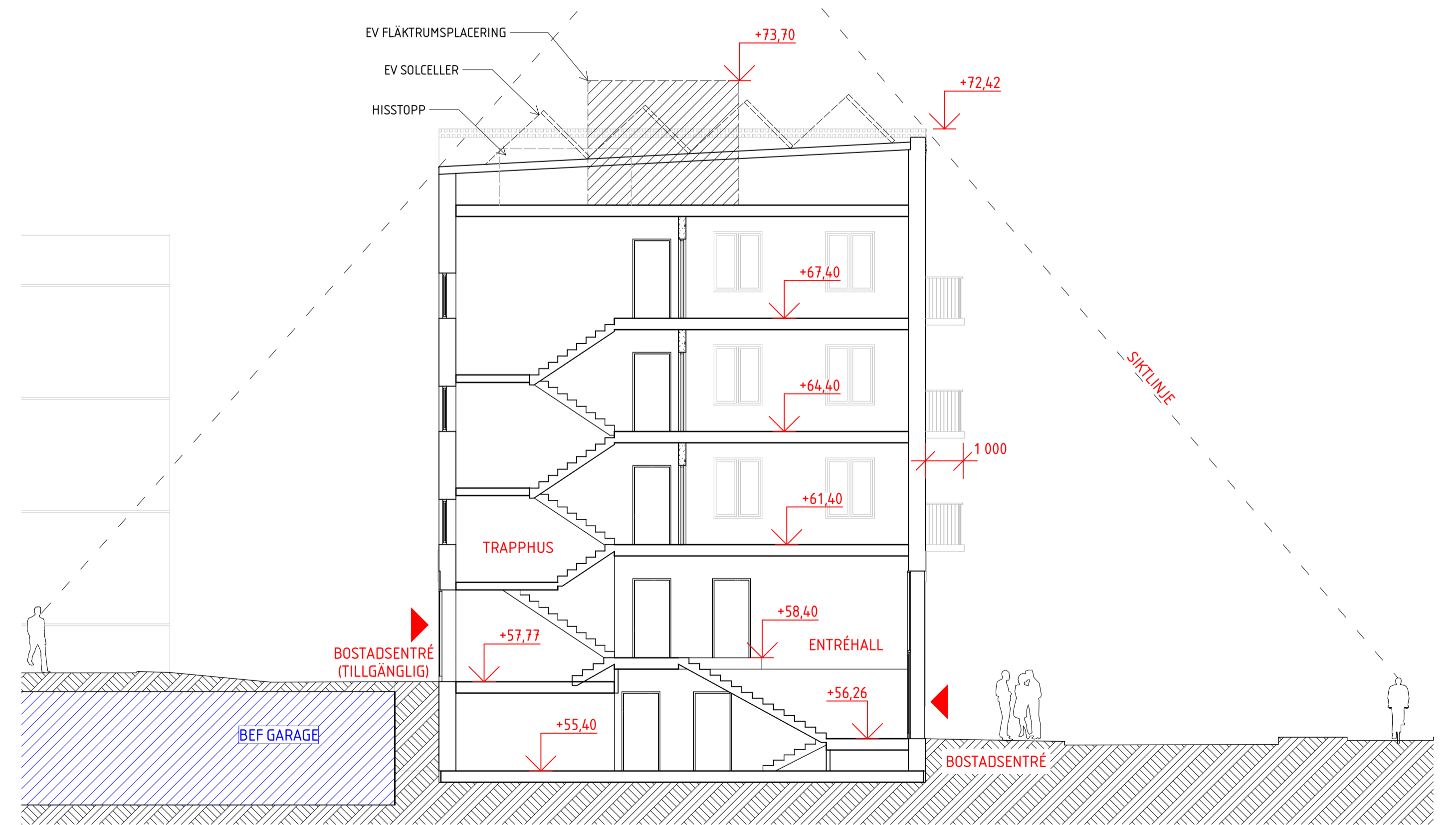




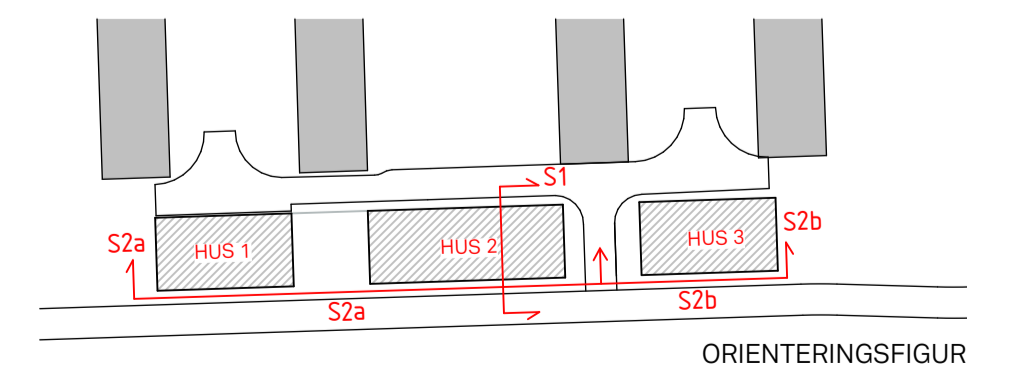
SEKTION S2a, 1:200

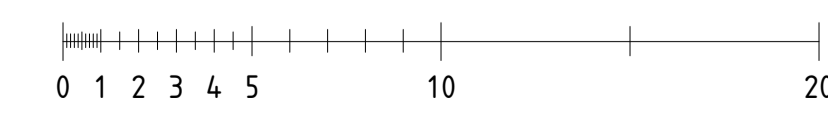
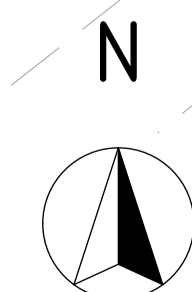
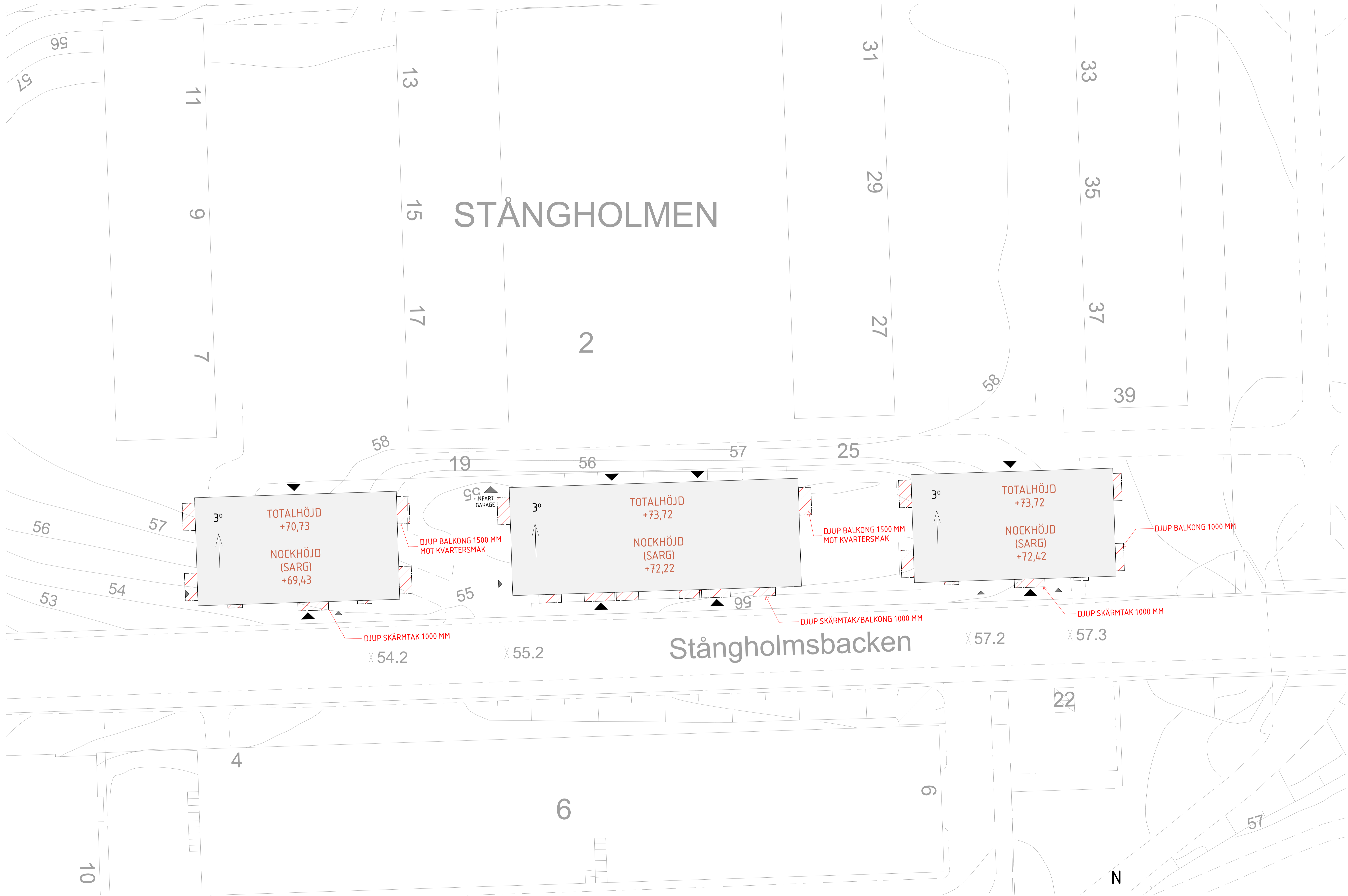


SEKTION S2b, 1:200

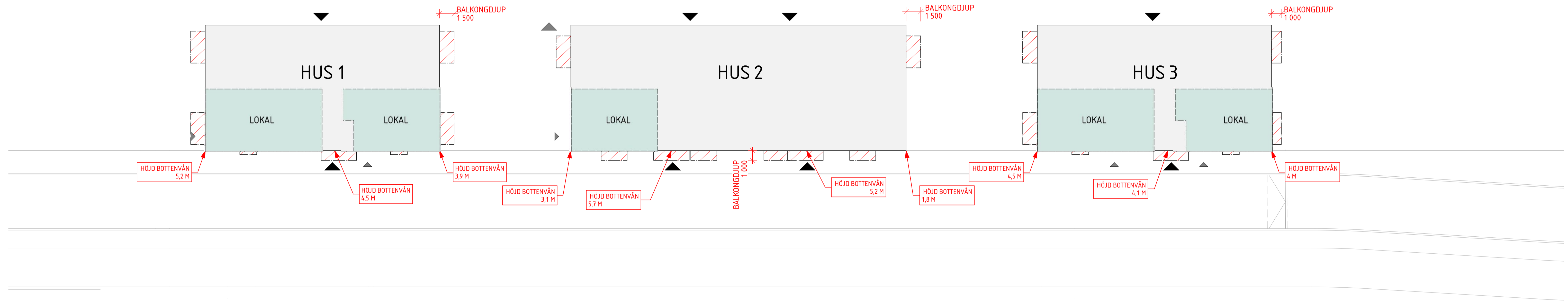


SEKTION S1, 1:100





STÅNGHOLMEN 2



A_BTA STÅNGHOLMEN 2

BTA LJUS	
PLAN 09	195
PLAN 10	1 067
PLAN 11	1 067
PLAN 12	1 067
PLAN 13	756
	4 152 m ²
BTA MÖRK	
PLAN 09	560
	560 m ²
	4 712 m ²

A_BYA STÅNGHOLMEN 2

Byggnadsarea	1 067
	1 067 m ²

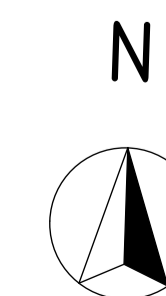
LOA Lokalarea BÄVERHOLMEN copy 1

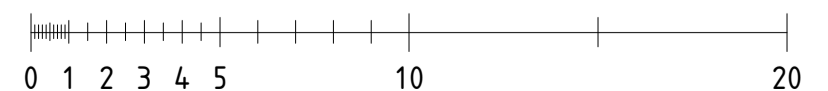
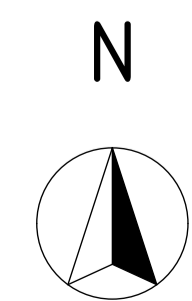
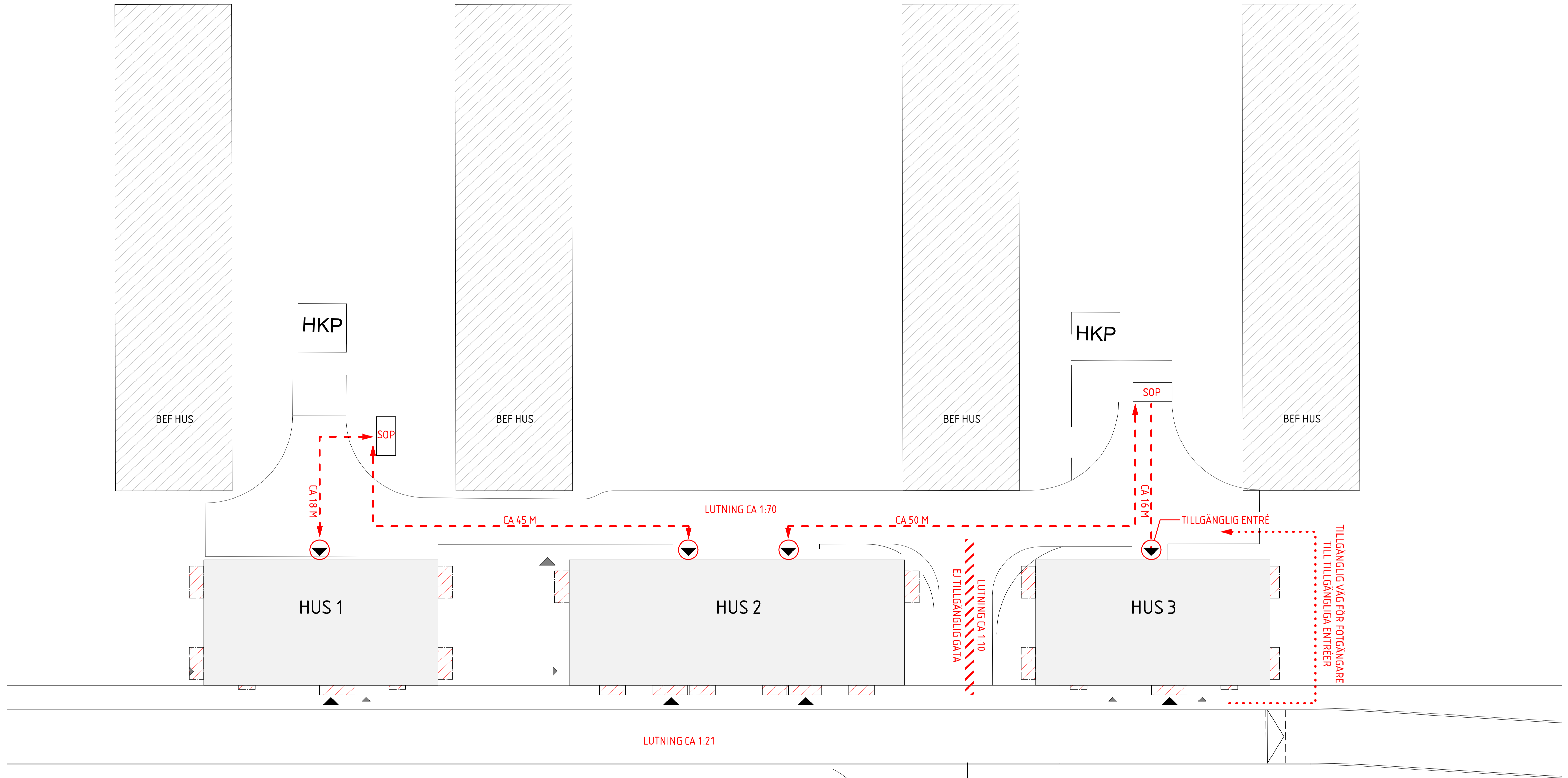
HUS 1	LOKAL	68
HUS 2	GEM. LOKAL	50
HUS 3	LOKAL	53
HUS 3	LOKAL	68
		238 m ²

ANTAL LHG/HUS			
	HUS 1	HUS 2	HUS 3
1 ROK			
2 ROK	6	18	8
3 ROK	6	6	6
4 ROK			
5 ROK			
TOTALT ANTAL LGH/HUS	12	24	14

TOTALT ANTAL LGH STÅNGHOLMEN 2

50





ENERGIANVÄNDNING STÅNGHOLMEN 2

Stångholmen 2 består av 2 st punkthus i 3-4 vån (F=1,47-1,49) samt 1 st lamellhus i 5 vån (F=1,15)

UTFORMNING

Husen i Stångholmen har geometriskt enkla former utan indrag eller livförskjutningar. Hus 2 har tack vare sin längd en bättre formfaktor än de kortare Hus 1 och 2. För dessa hus behöver närmare studier göras för att ta reda på hur stor fönsterarea de kan ha för att klara BBR:s krav på U-medelvärde (U_m). Målet är ca 25% fönsterarea vilket behöver stämmas av mot energiprestandan.

För solavskärmning räcker mellanliggande/utanpåliggande persienner i fönster.

SOLCELLER

Husens orientering gör, i kombination med att de har platta tak, att de enkelt kan förses med solceller/solfångare.

