

Inkom till Stockholms stadsbyggnadskontor - 2020-04-07, Dnr 2017-19119



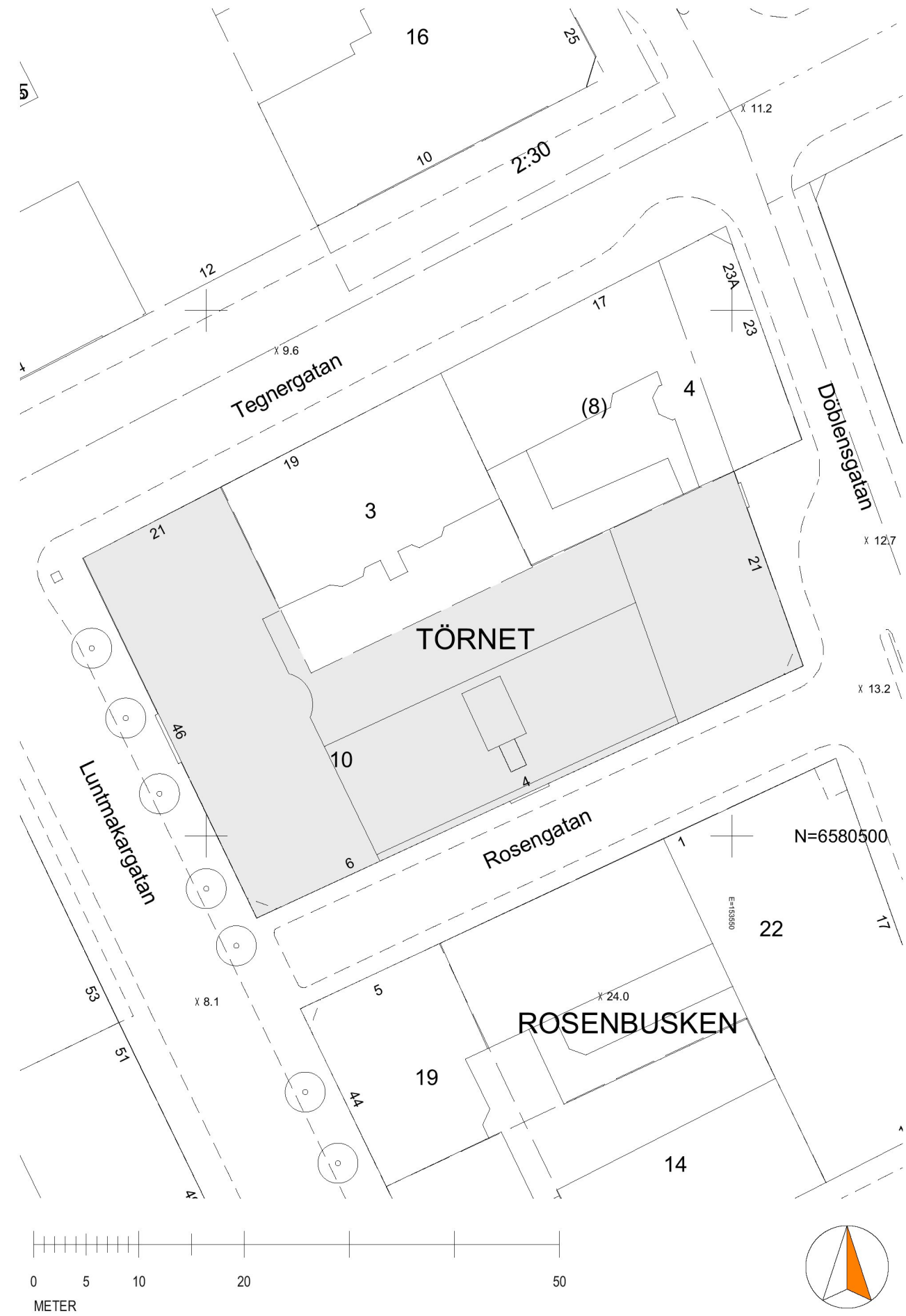
# TÖRNET 10



## ILLUSTRATIONER OCH SOLSTUDIER MATERIAL TILL SAMRÅD 2020-04-07

Thule Fastighetsutveckling AB  
Östermalmsgatan 87E, 1tr  
114 59 Stockholm  
Växel: 08-555 199 00  
[www.thulefastighetsutveckling.se](http://www.thulefastighetsutveckling.se)



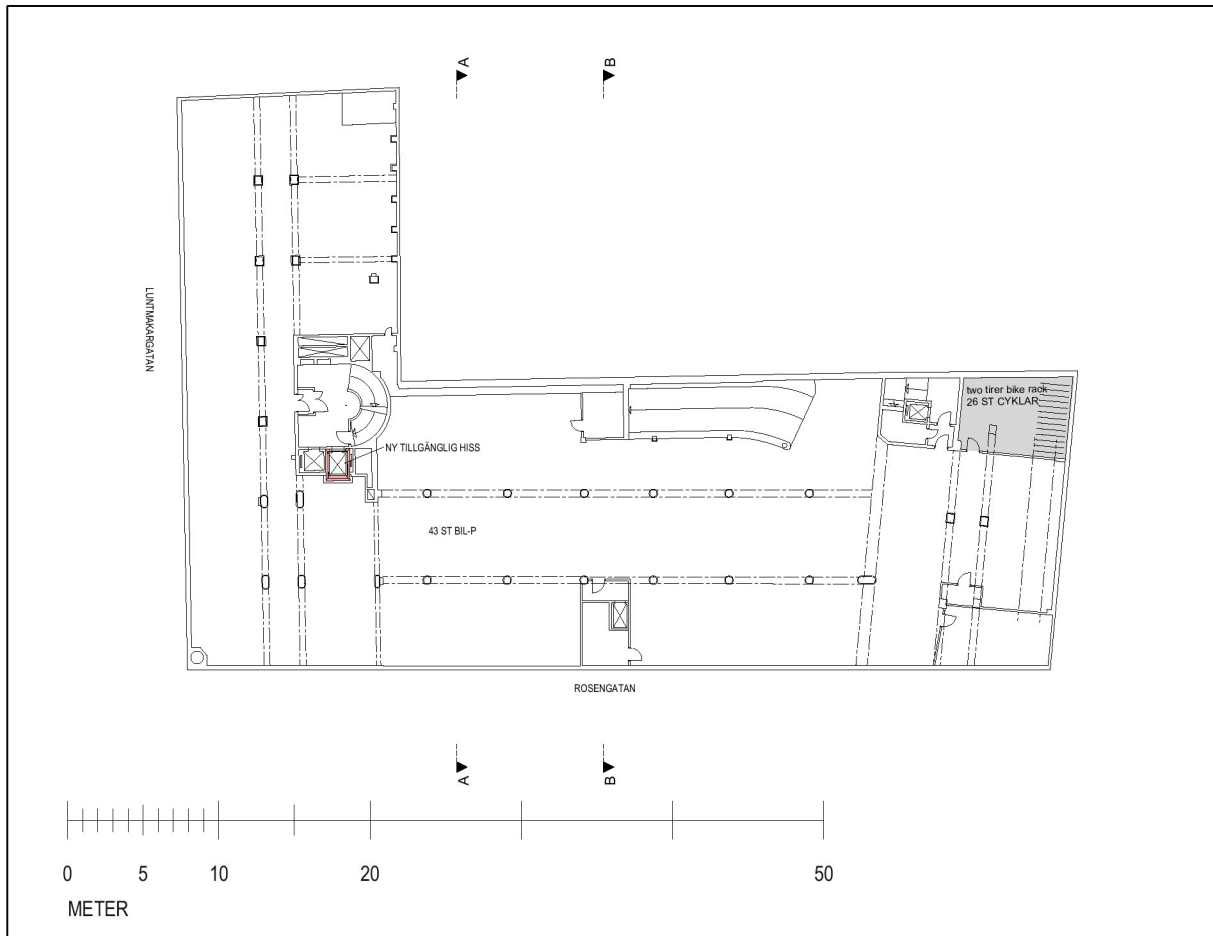


**Situationsplan**  
**1:500**

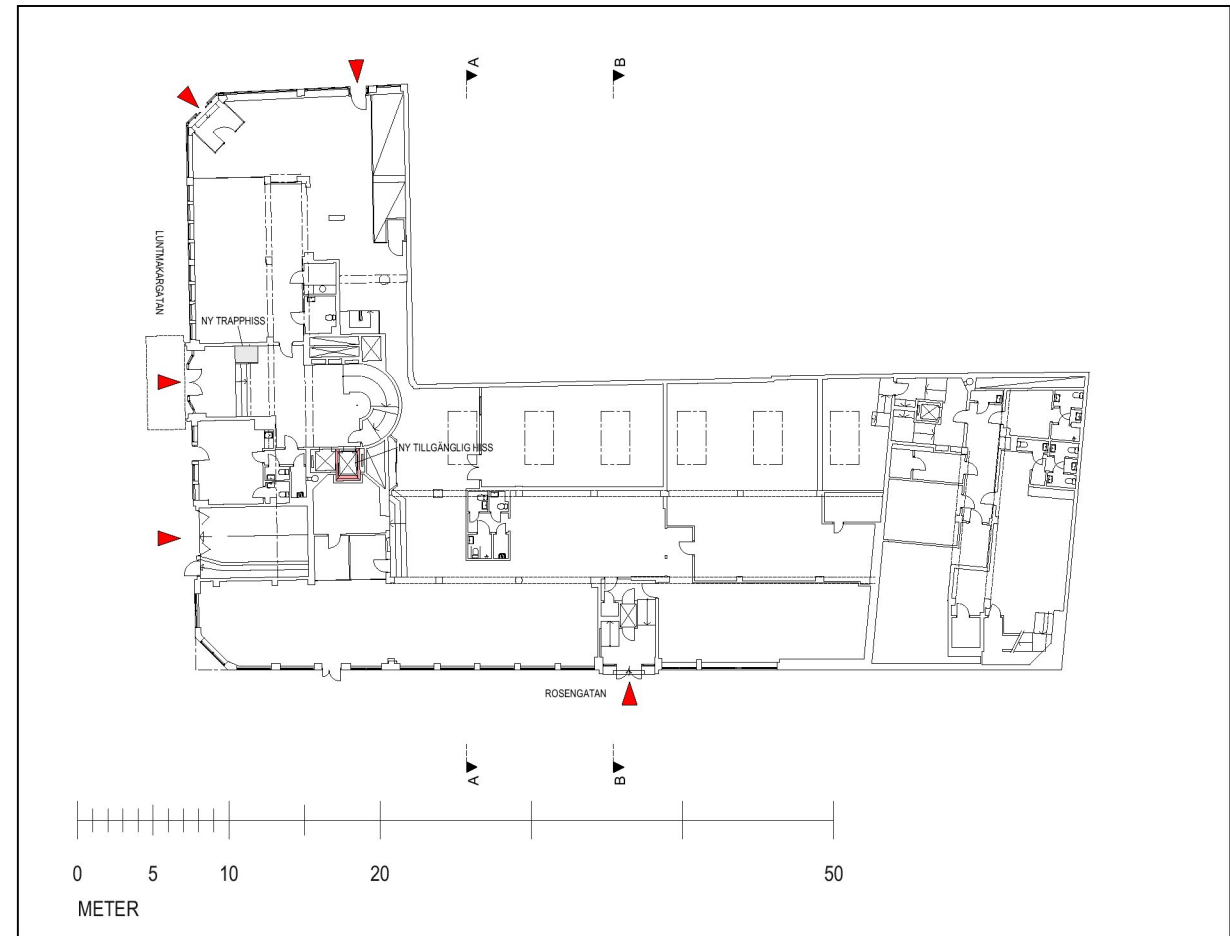


SITUATIONSPLAN 1:200

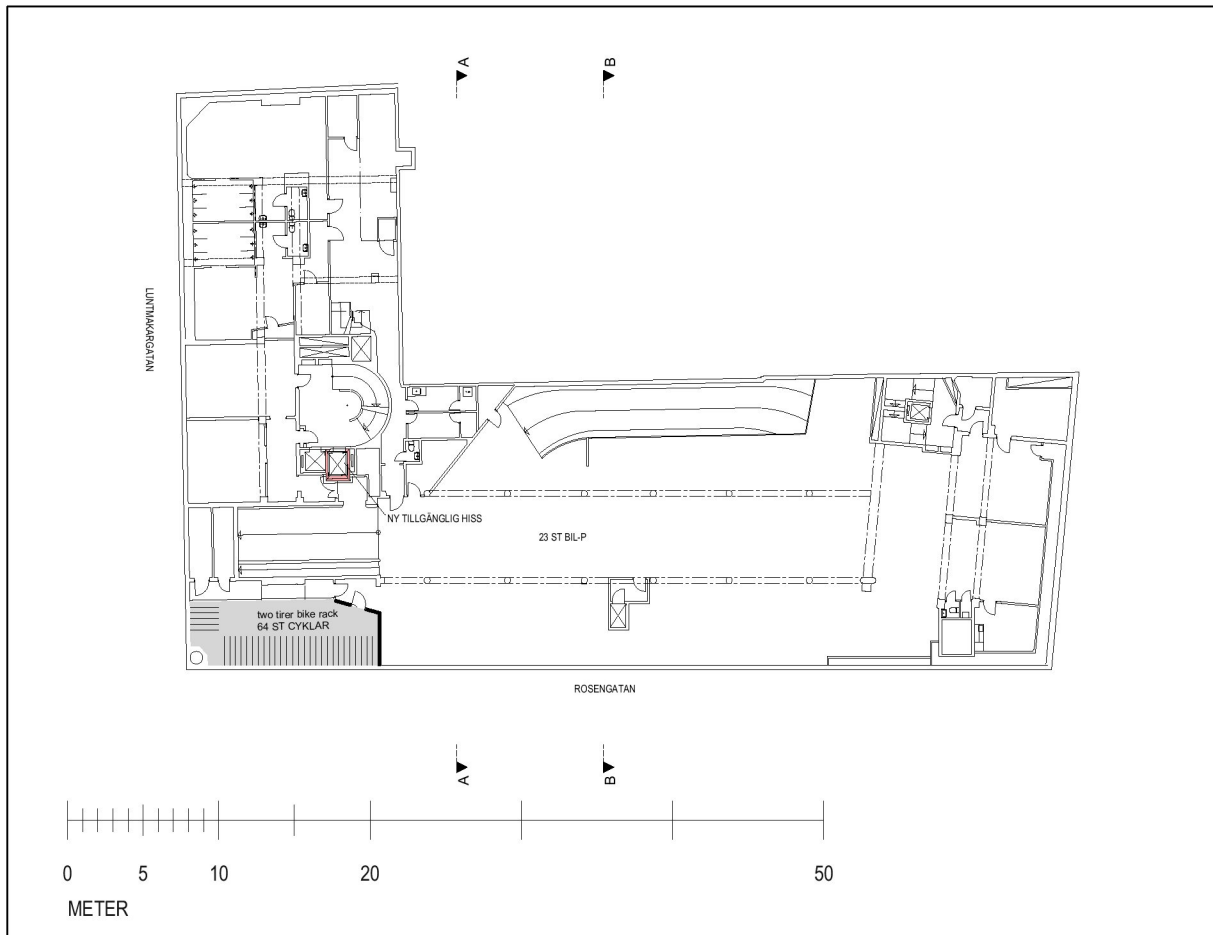
Inkom till Stockholms stadsbyggnadskontor - 2020-04-07, Dnr 2017-19119



**Plan 2 -2 tr**  
**1:500**



**Plan 4 0 tr**  
**1:500**

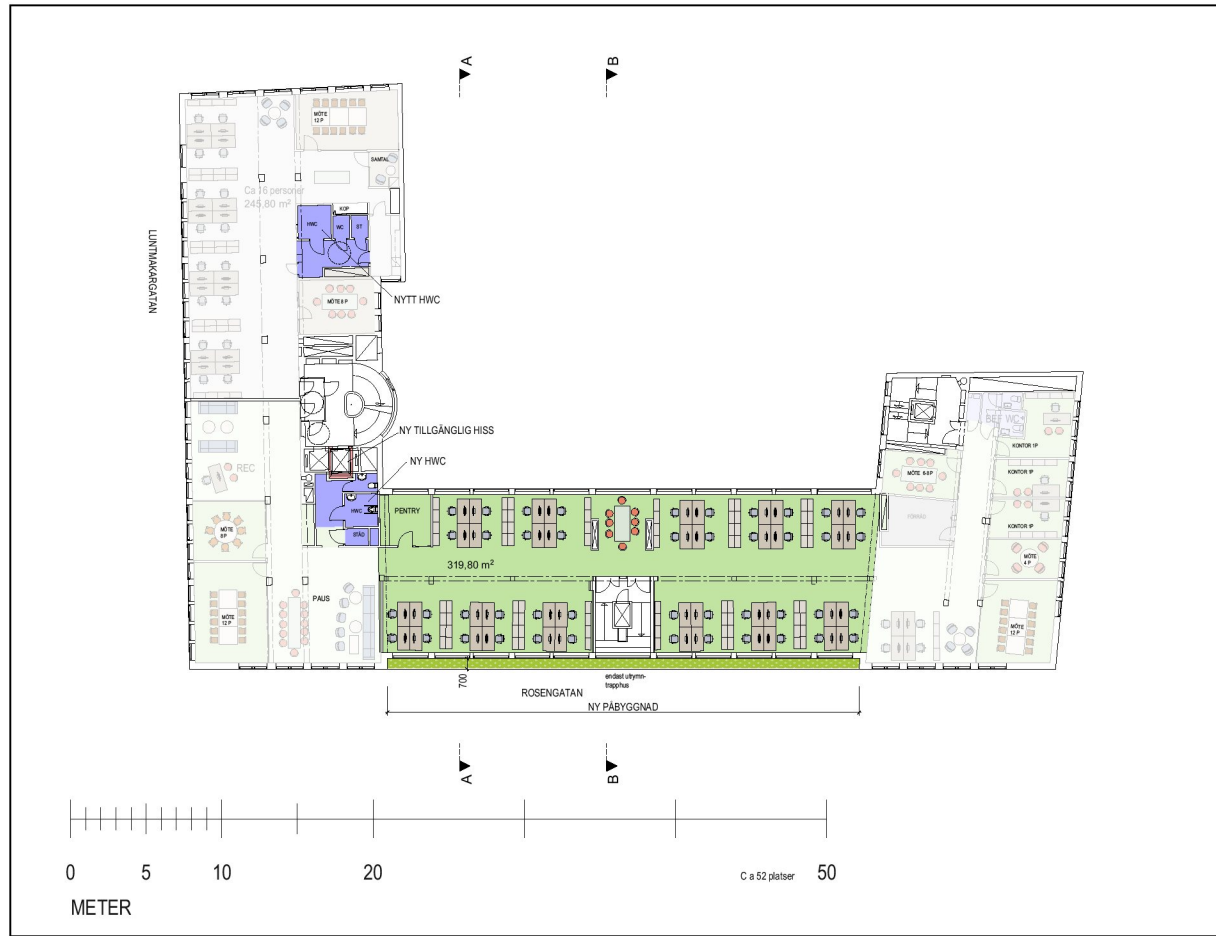


**Plan 3 -1 tr**  
**1:500**



**Plan 5 1 tr**  
**1:500**





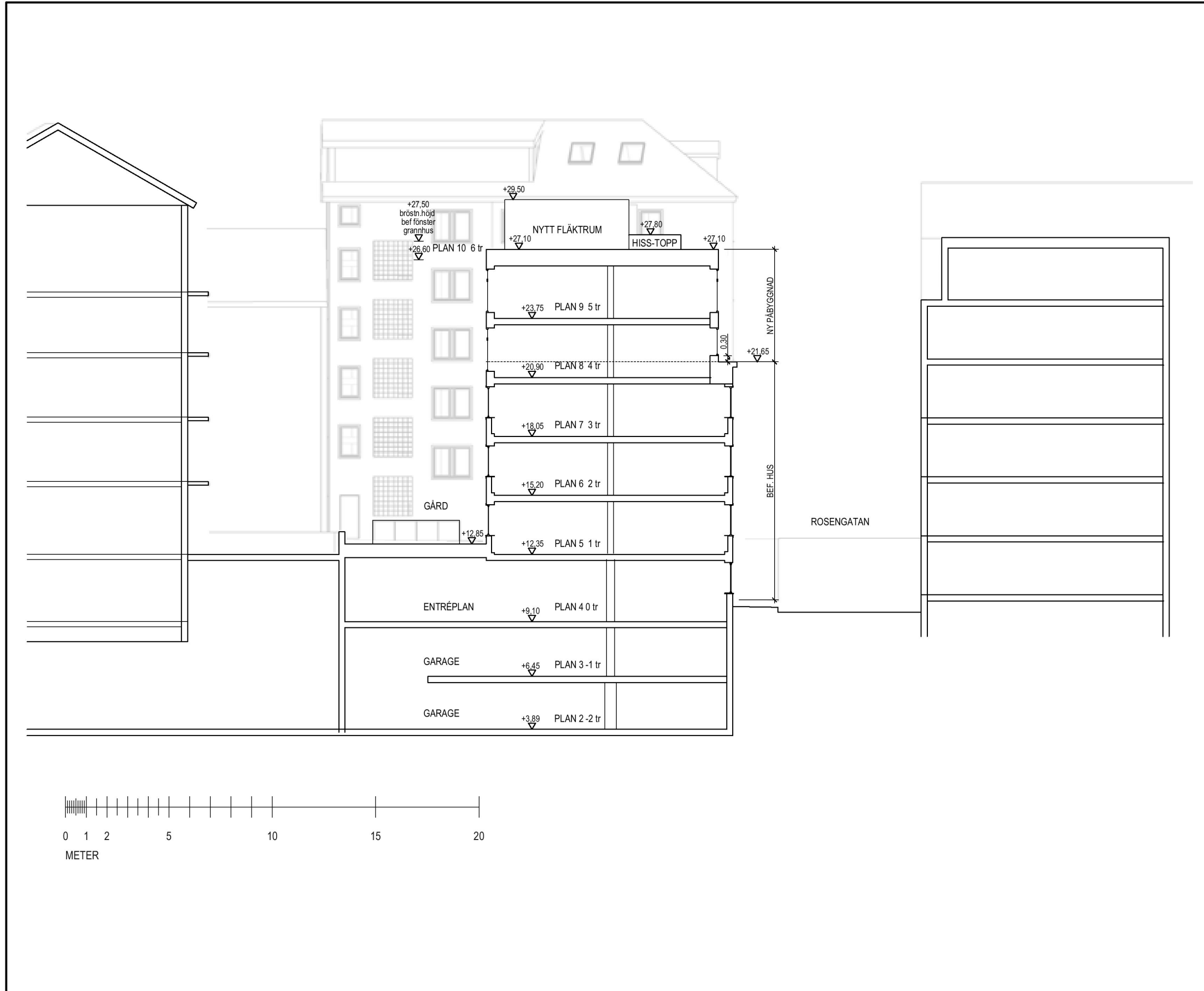
**Plan 8 4 tr**  
**1:500**



**Plan 10 6 tr**  
**1:500**

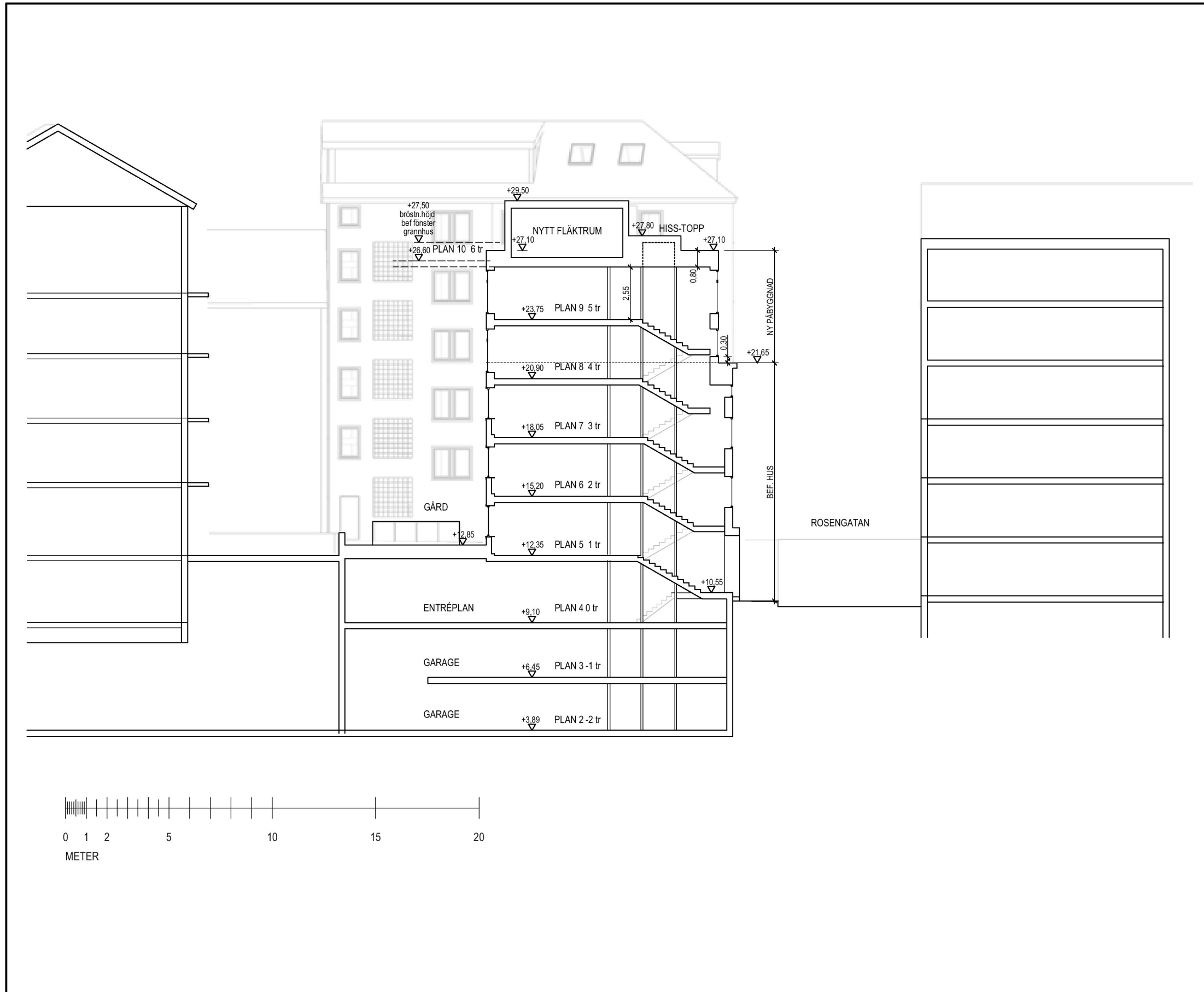


**Plan 9 5 tr**  
**1:500**



**Sektion A-A**  
1:200





**Sektion B-B**  
1:200



**Fasad mot gata**  
**1:200**





**Fasad mot gård**  
**1:200**





FLYGVY







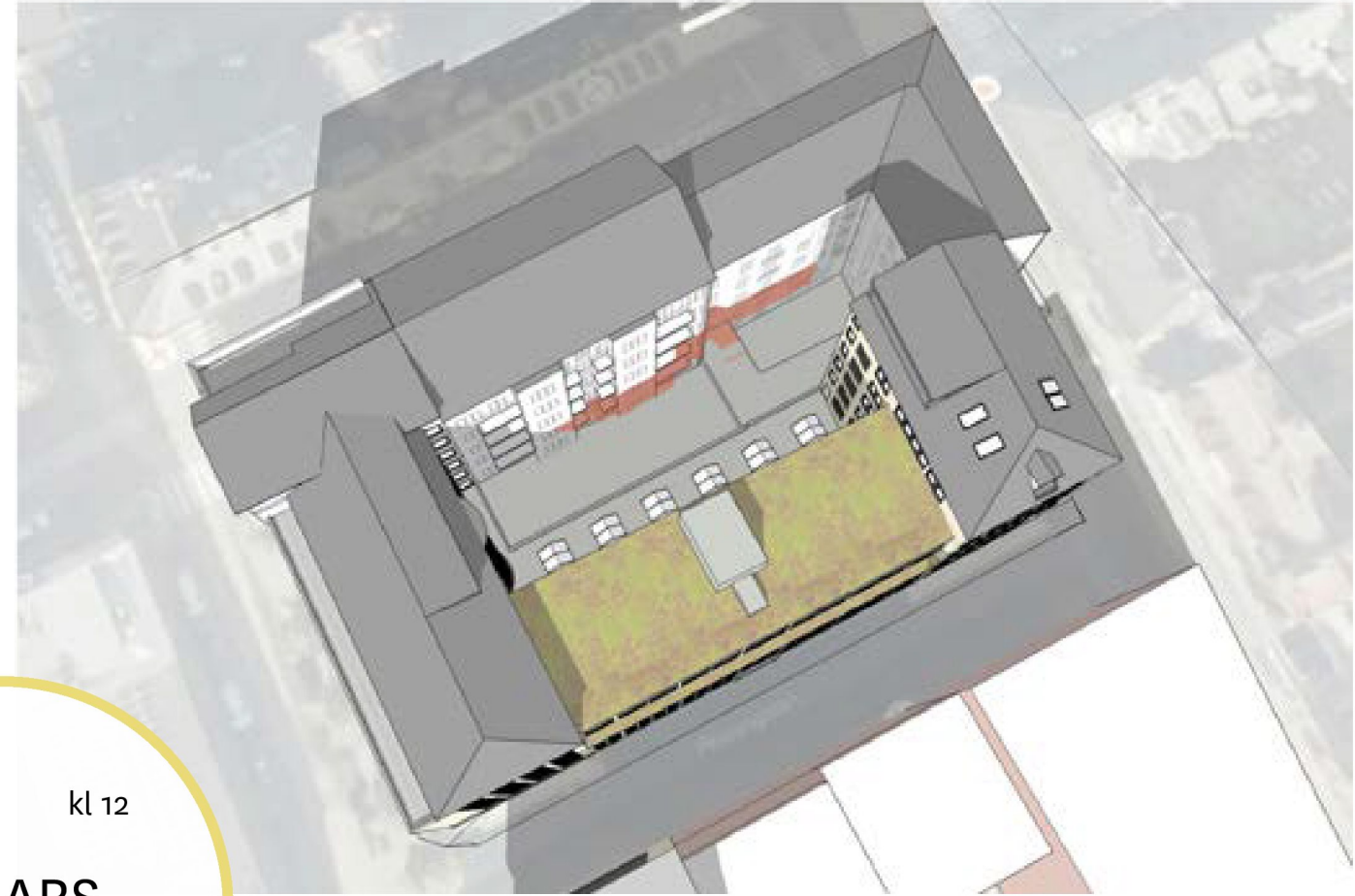
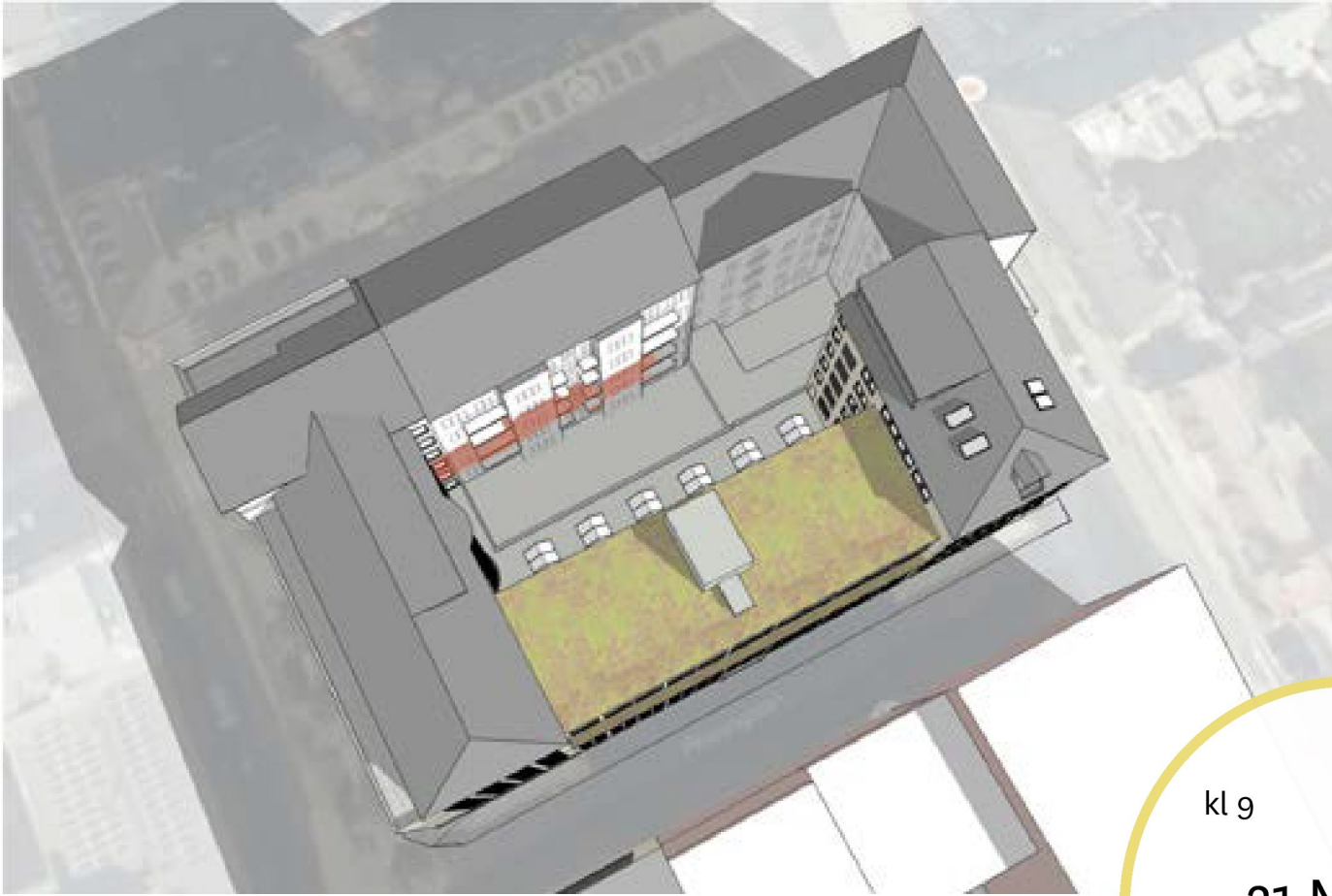


VY FRÅN LUNTMAKARGATAN FOTOMONTAGE

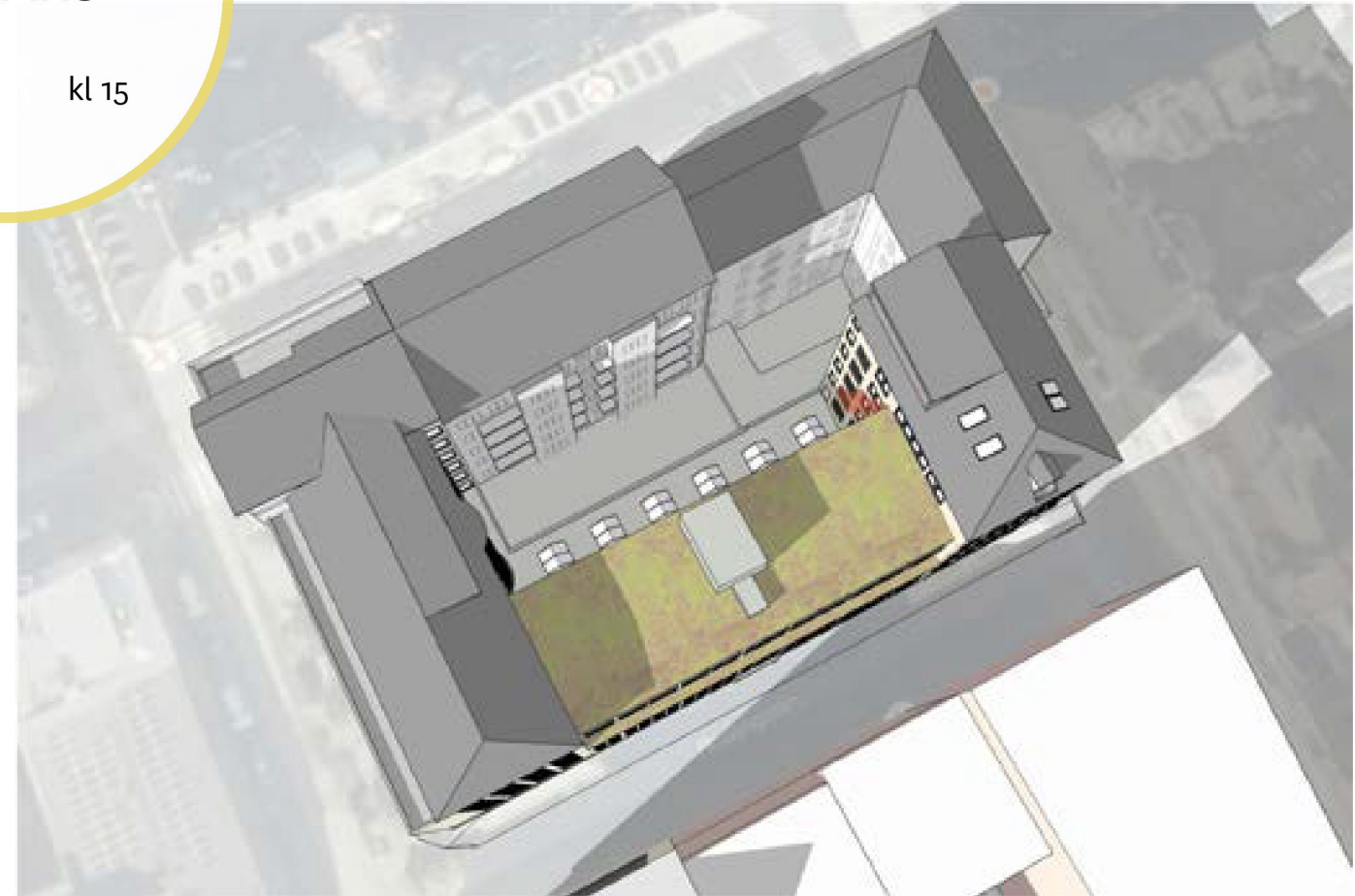
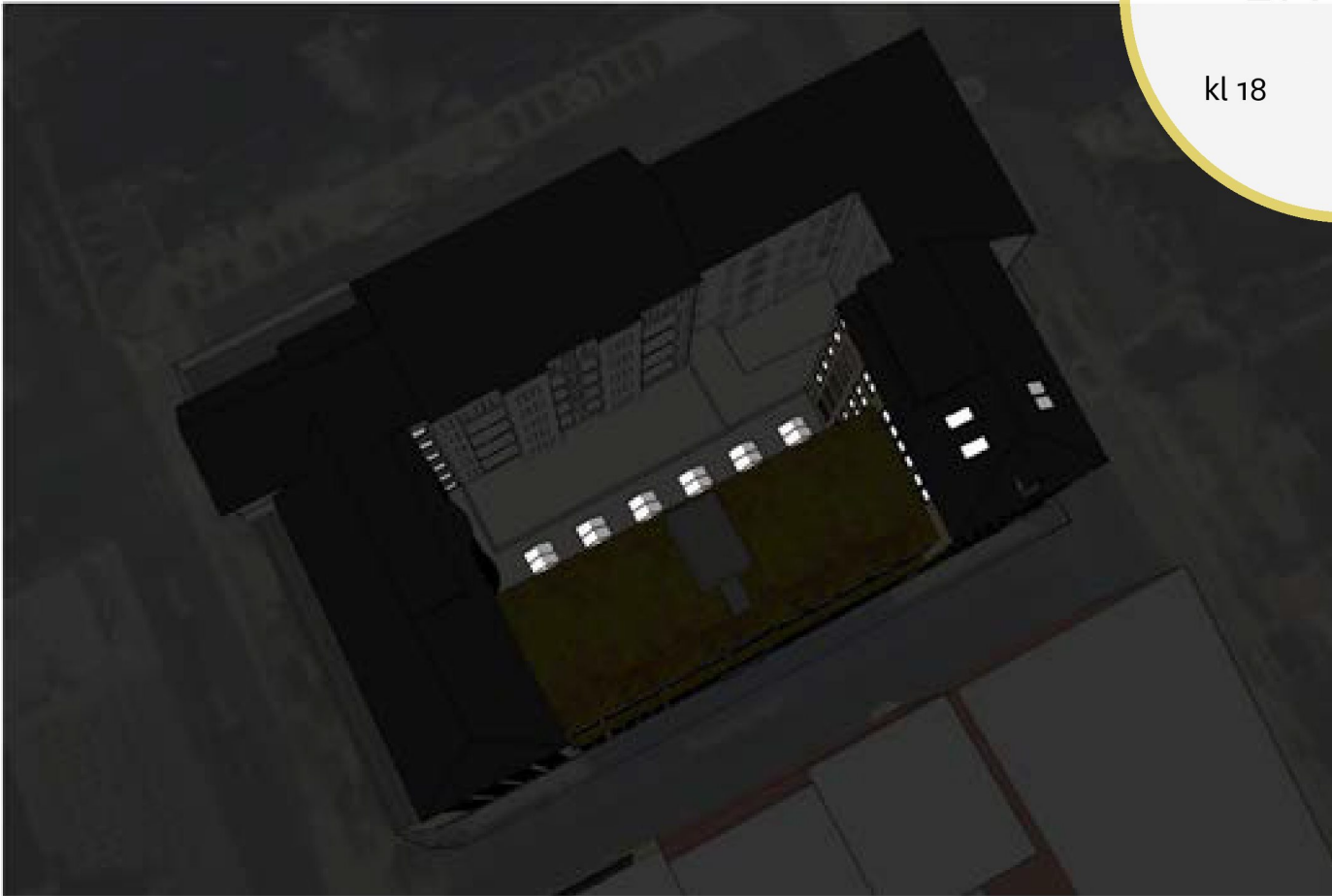




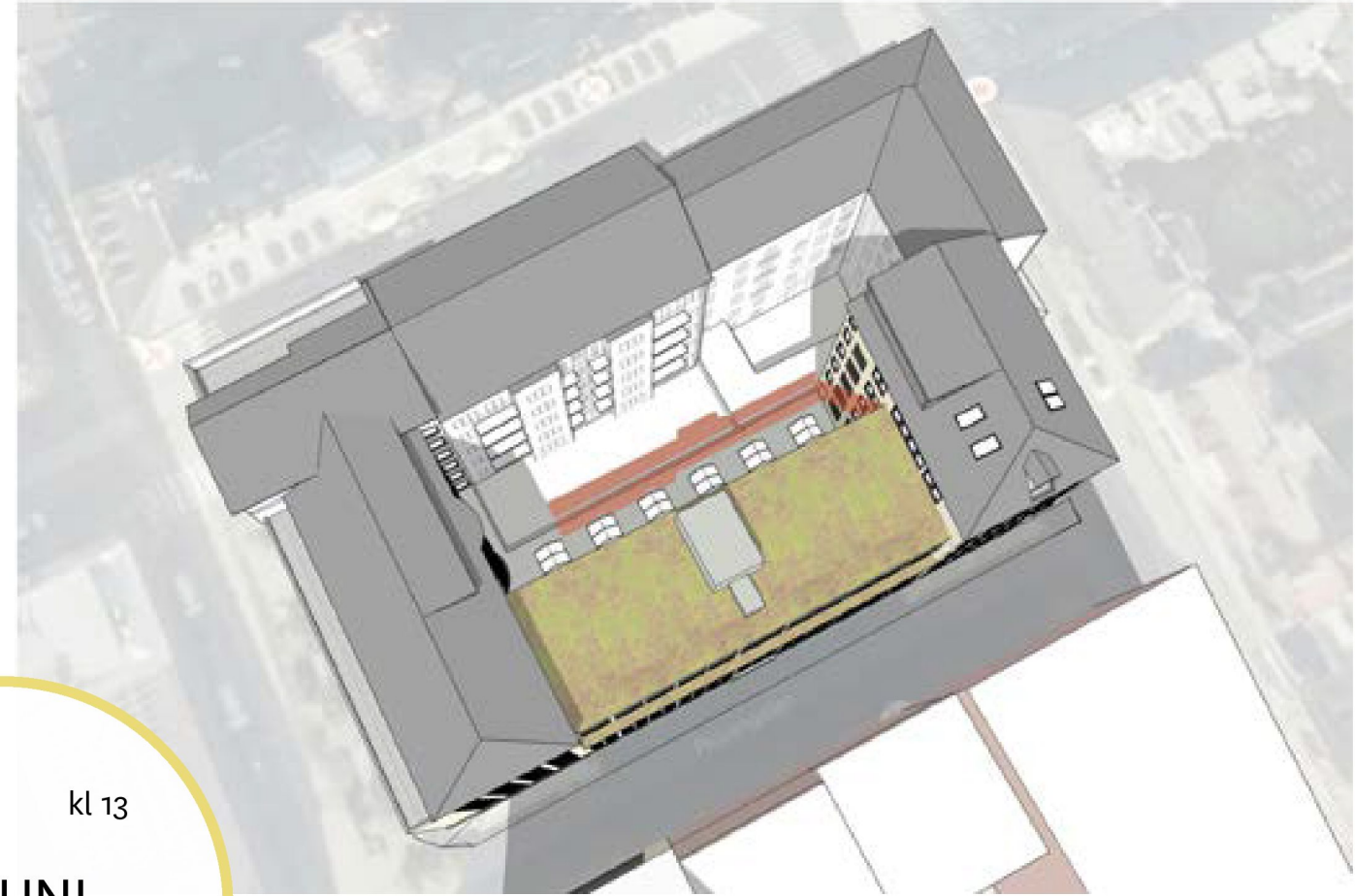
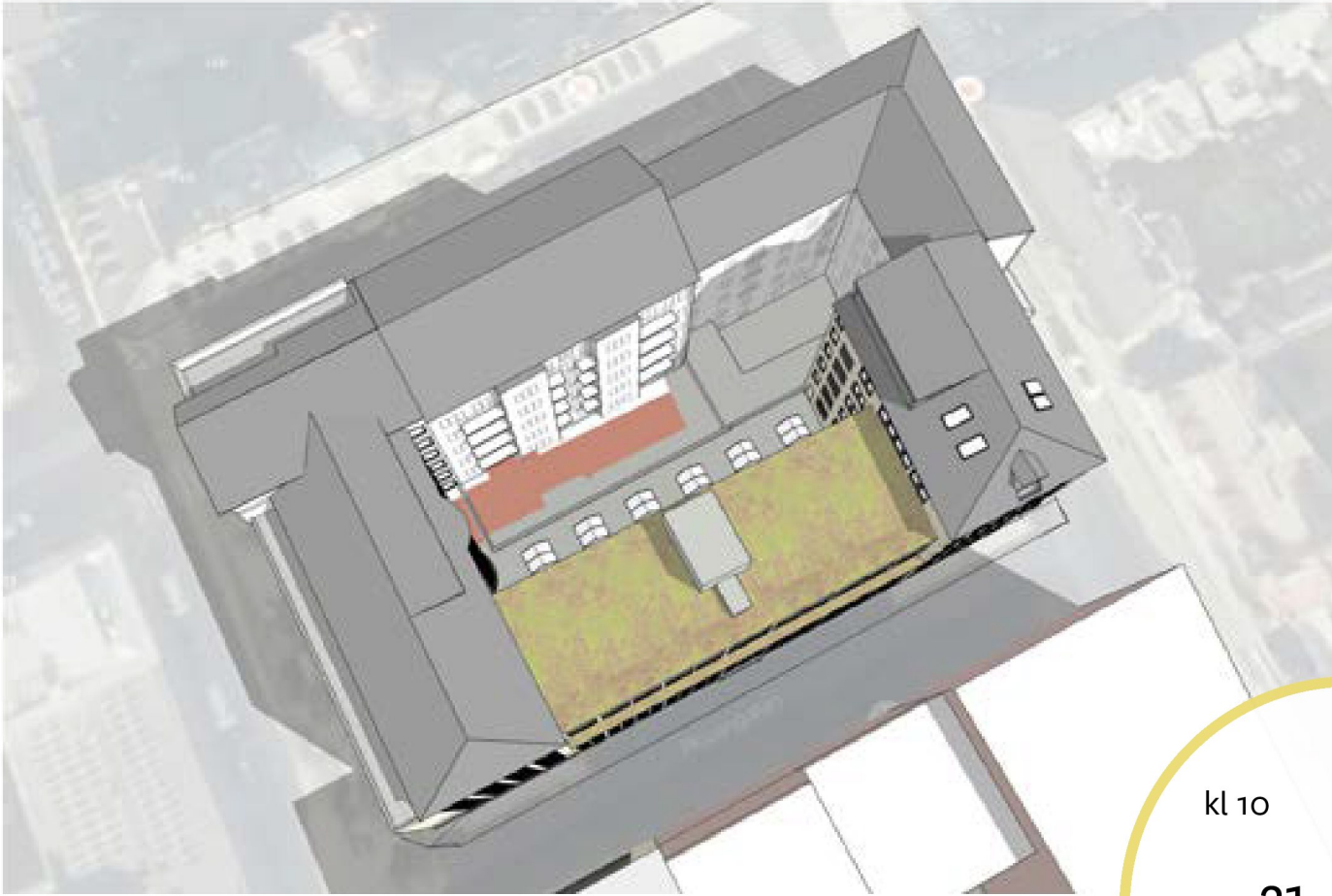




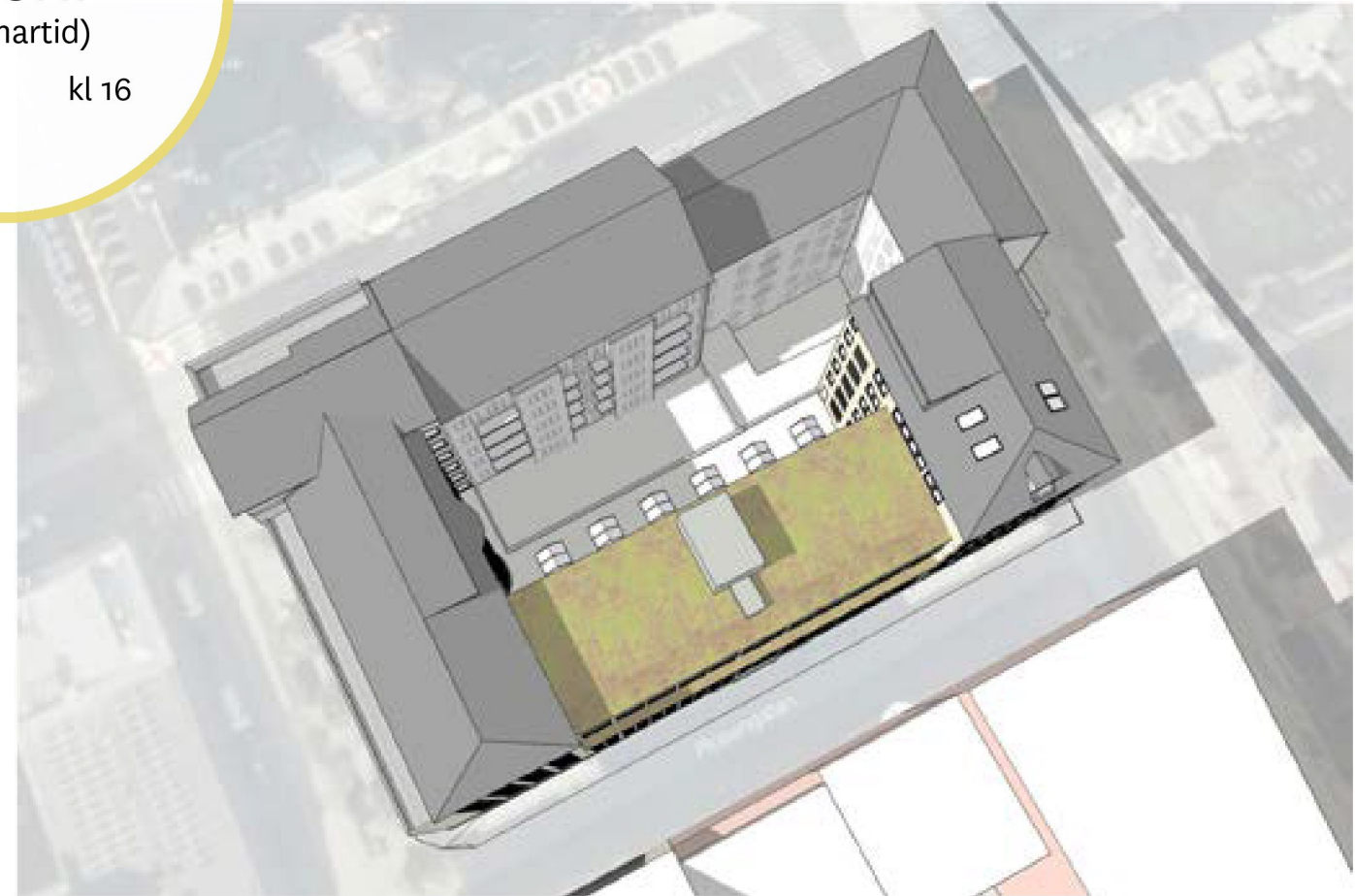
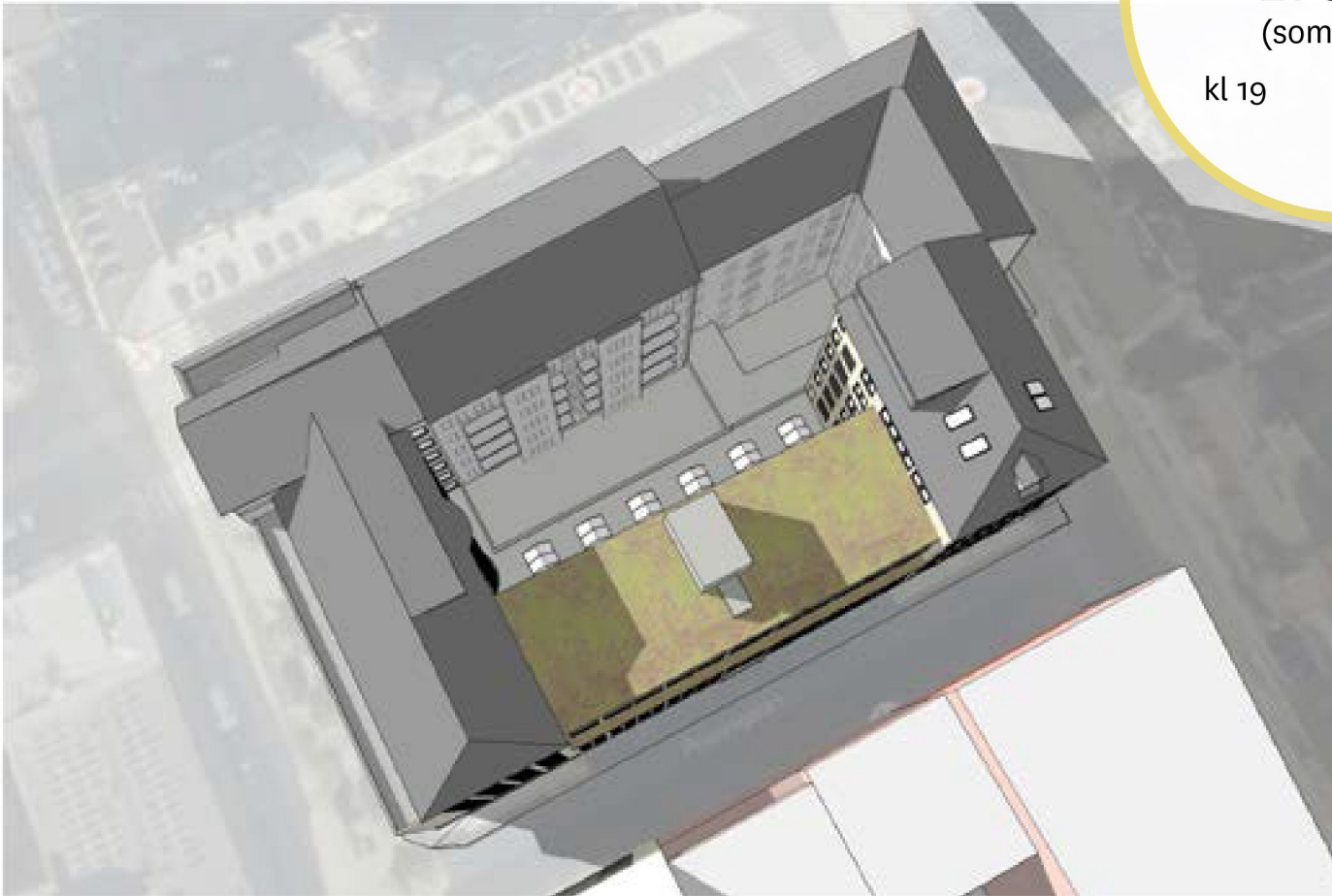
kl 9      kl 12  
**21 MARS**  
kl 18      kl 15



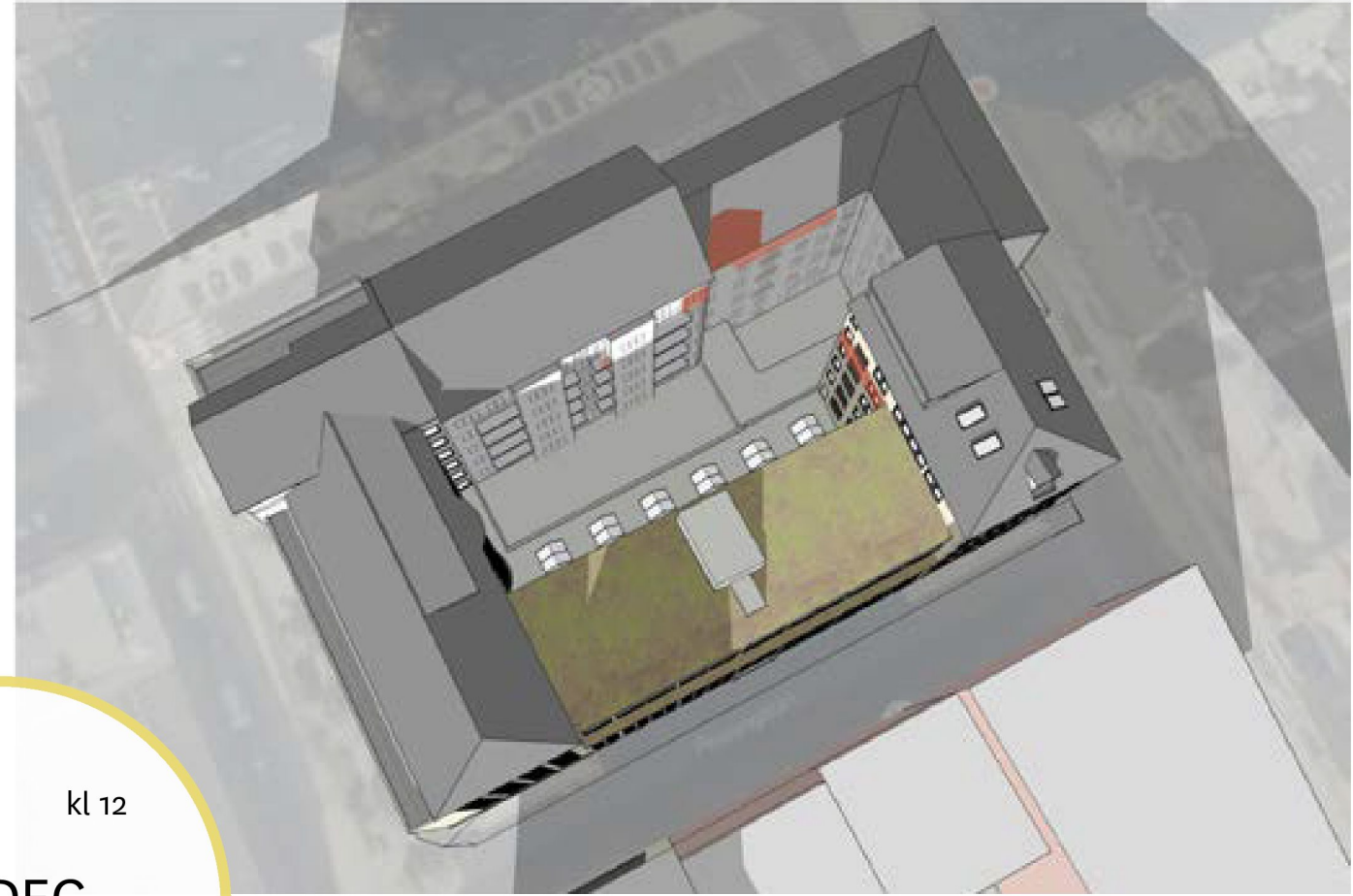
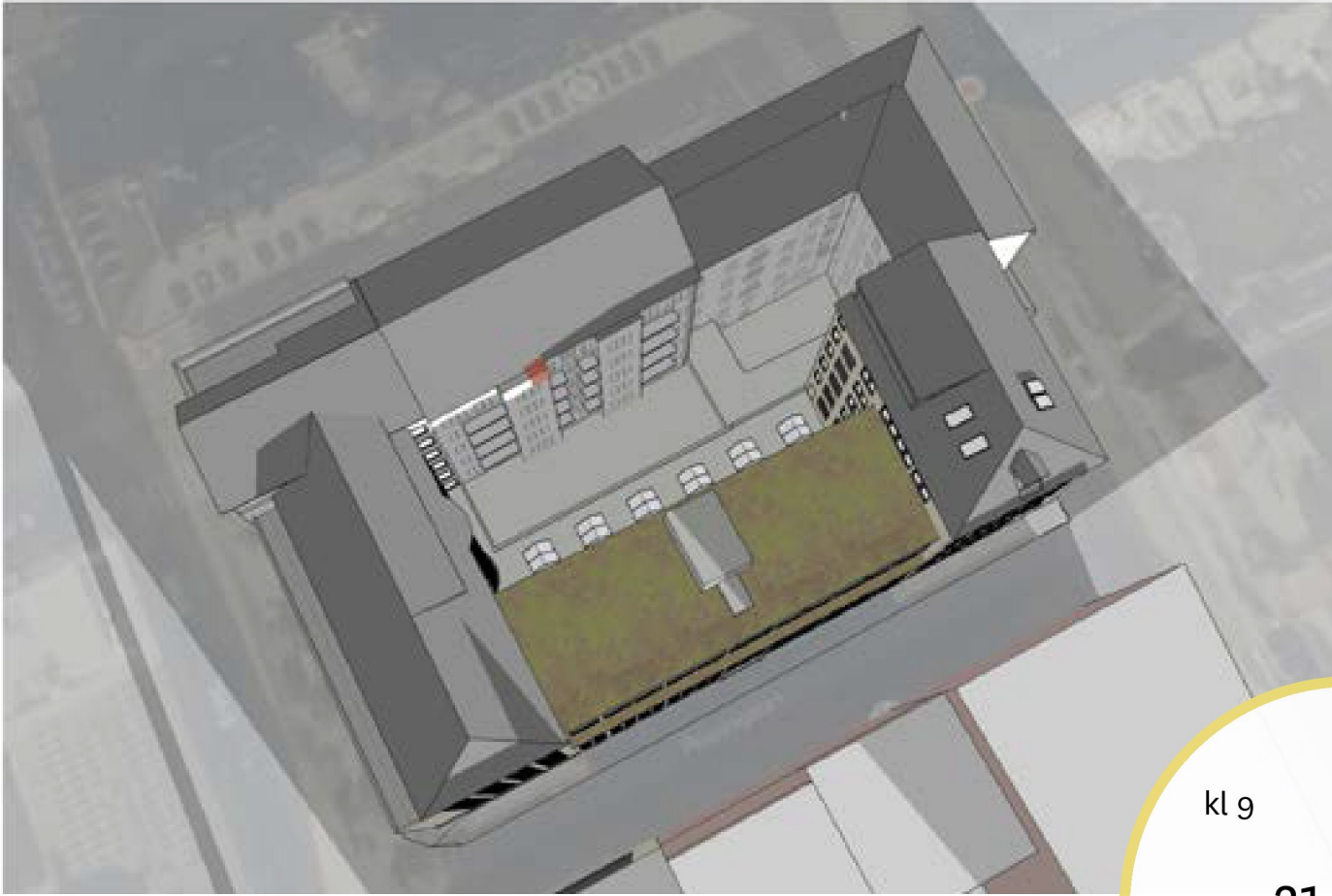




kl 10      kl 13  
**21 JUNI**  
(sommartid)  
kl 19      kl 16







kl 9      kl 12  
21 DEC  
kl 18      kl 15

