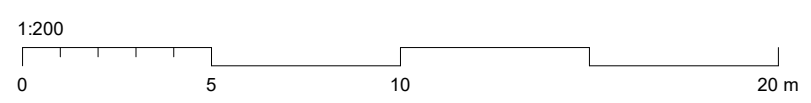
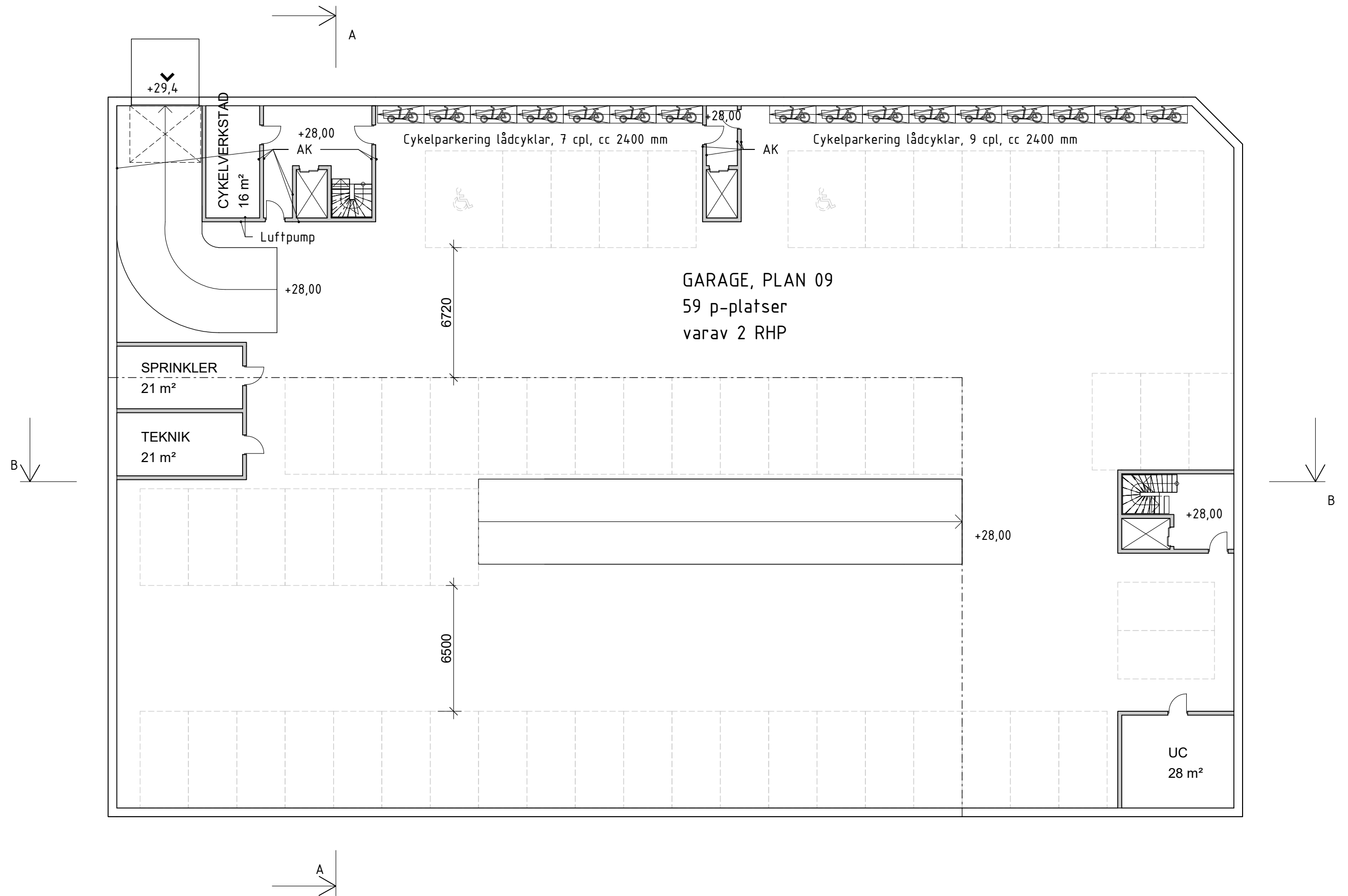


GARAGE, PLAN 08  
46 p-platser

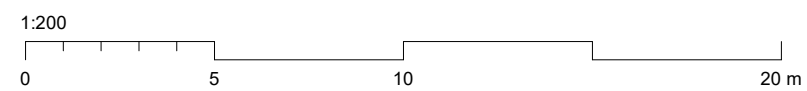
24 cpl, cc700

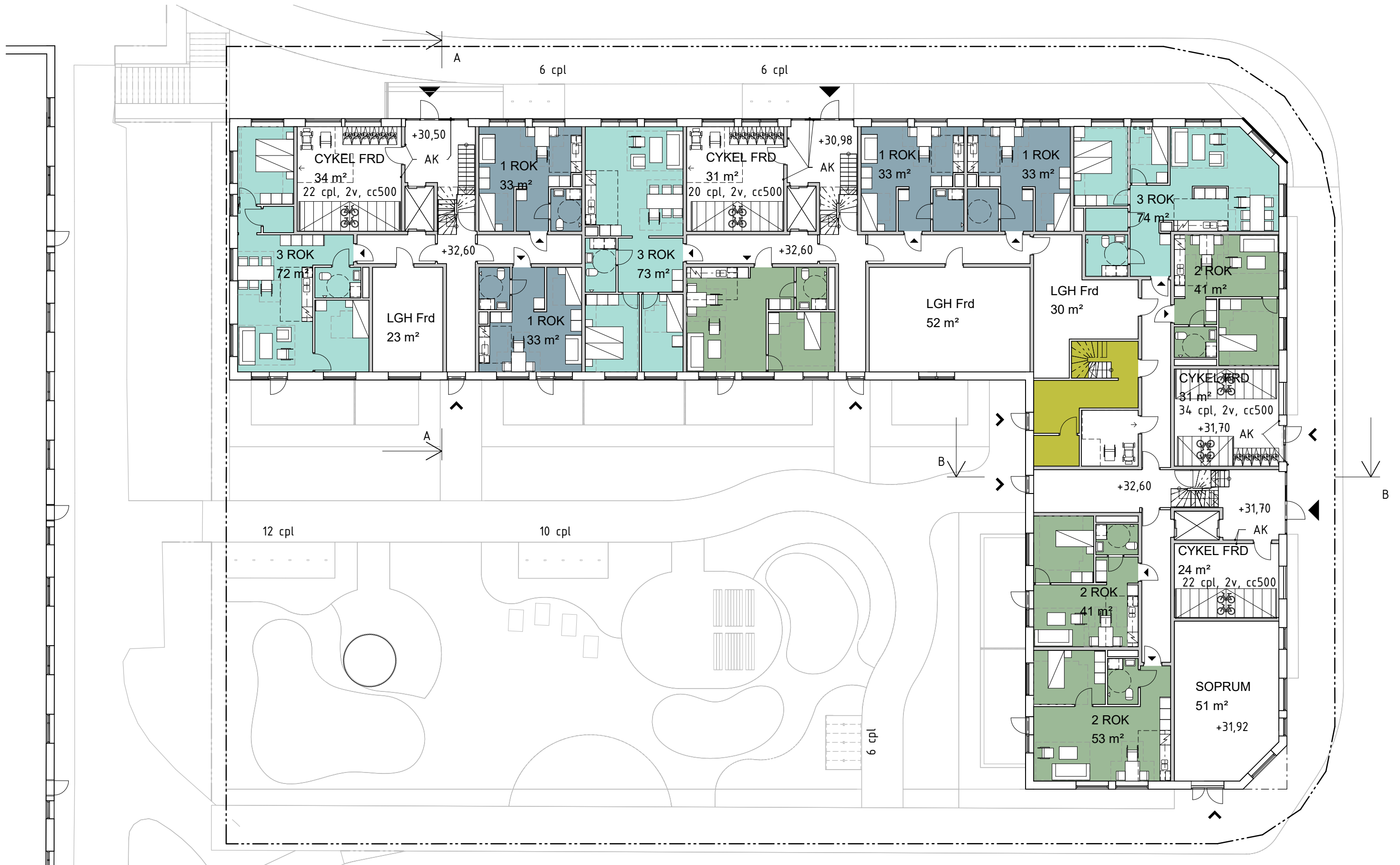


SKALA: 1 : 200 A3

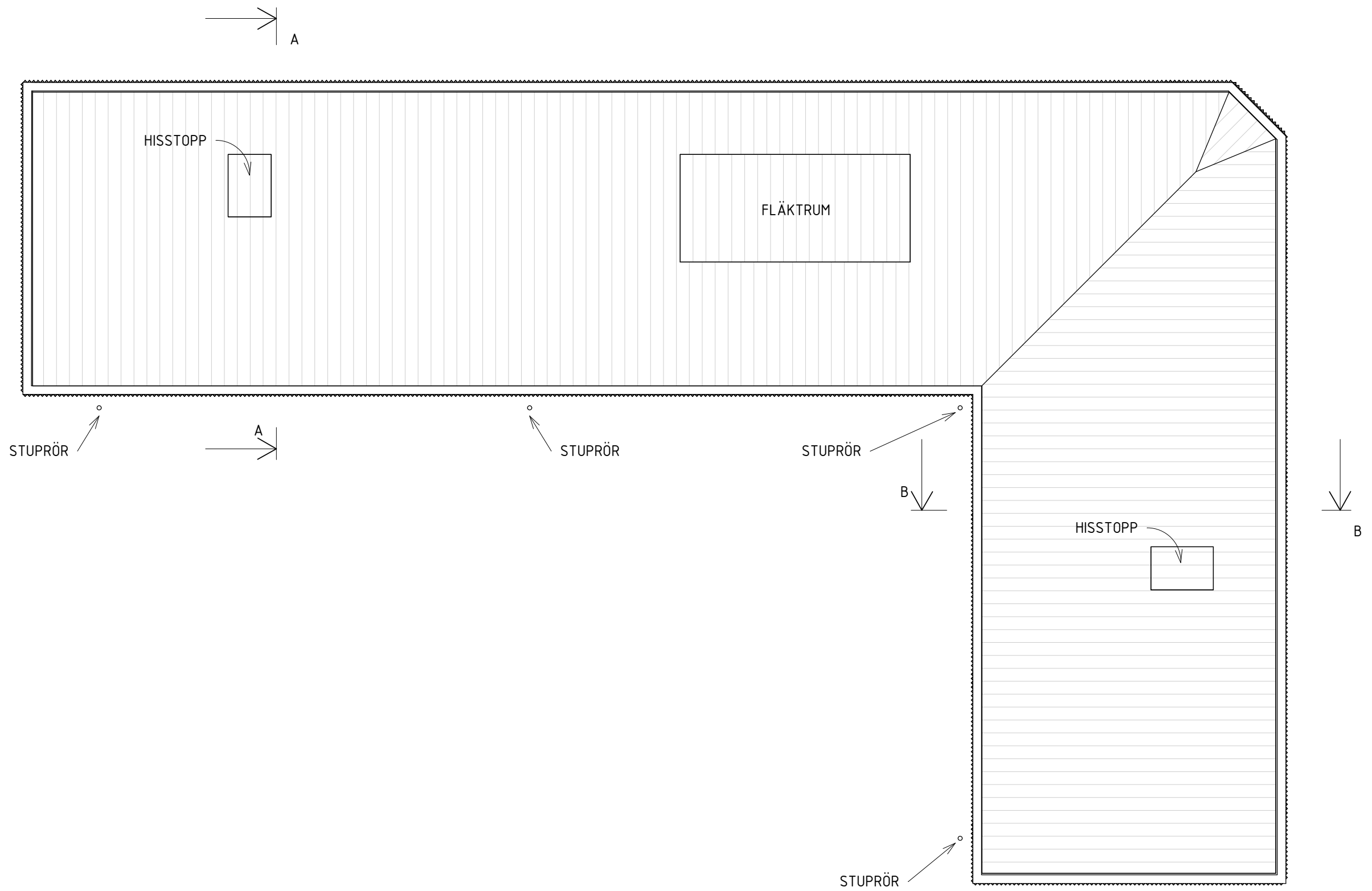


GARAGE, PLAN 09  
59 p-platser  
varav 2 RHP

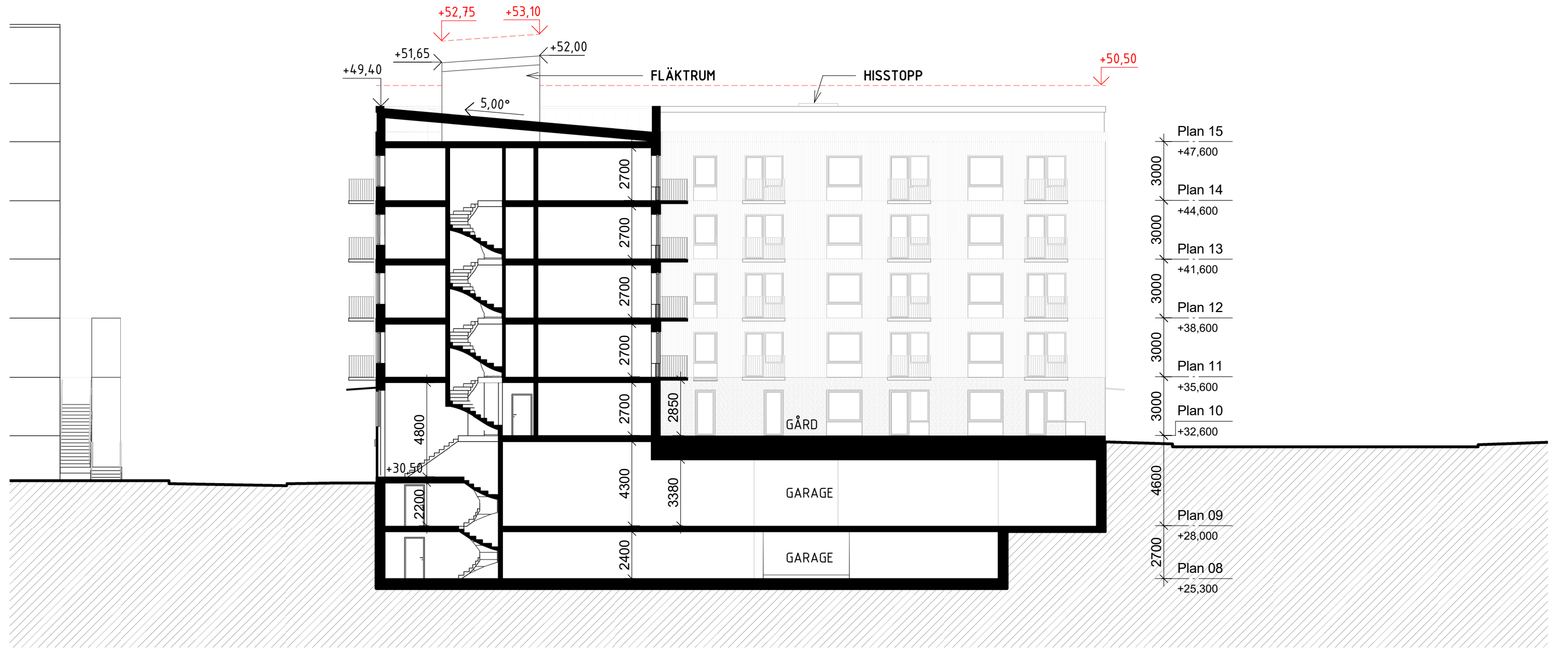




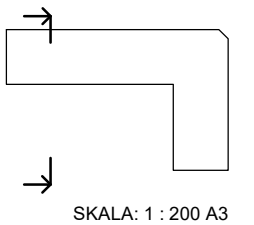




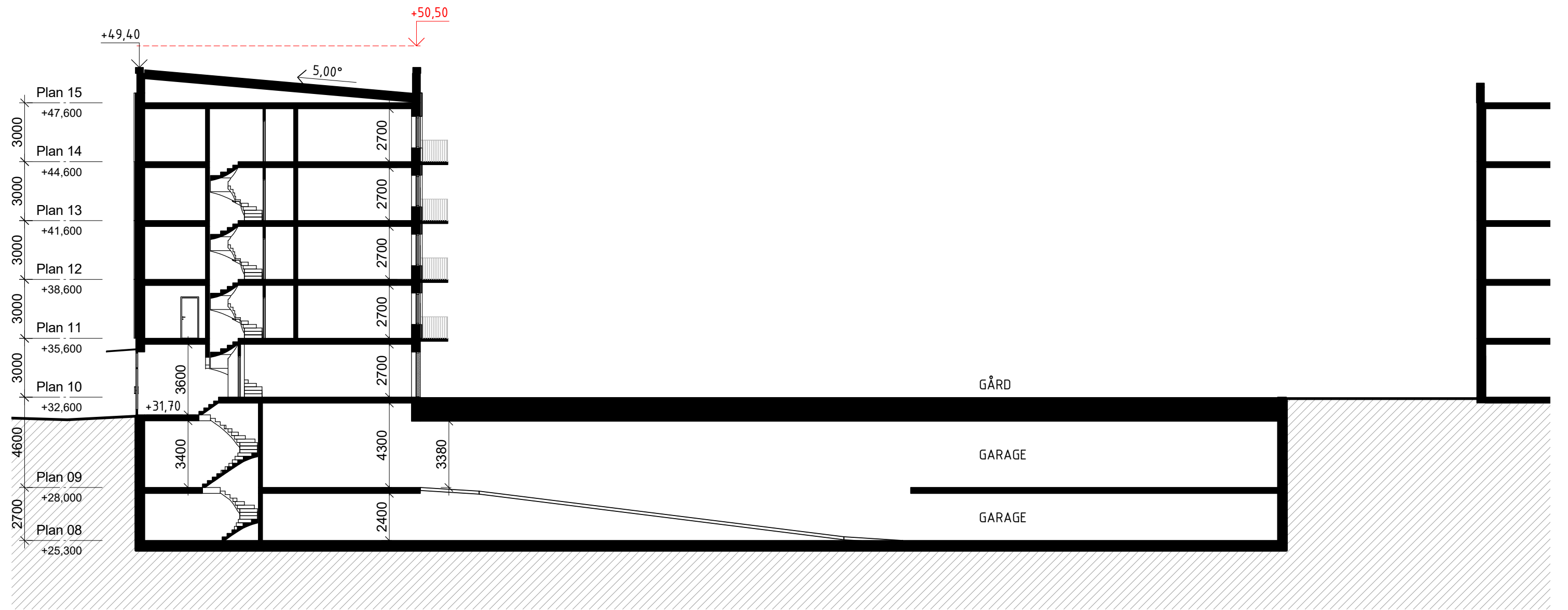
+ XX,XX  
↓  
EVENTUELL HÖJD OM VI BYTER  
TILL TRÄSTOMME



Plan 15	+47,600
Plan 14	+44,600
Plan 13	+41,600
Plan 12	+38,600
Plan 11	+35,600
Plan 10	+32,600
Plan 09	+28,000
Plan 08	+25,300

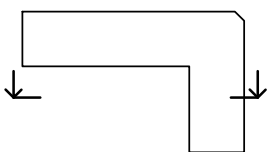
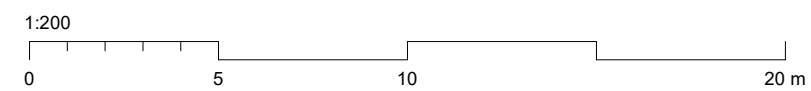


+ XX,XX  
↓  
EVENTUELL HÖJD OM VI BYTER  
TILL TRÄSTOMME



Inkom till Stockholms stadsbyggnadskontor - 2024-05-27, Dnr 2021-10030

Kvarnluckan  
2024-03-11



SKALA: 1 : 200 A3











BTA		
ARK Areatyp	Level	Area

BTA	Plan 10	1174 m <sup>2</sup>
BTA	Plan 11	1177 m <sup>2</sup>
BTA	Plan 12	1177 m <sup>2</sup>
BTA	Plan 13	1177 m <sup>2</sup>
BTA	Plan 14	1177 m <sup>2</sup>
<b>BTA: 5</b>		<b>5880 m<sup>2</sup></b>

BTA (Mörk)	Plan 08	1886 m <sup>2</sup>
BTA (Mörk)	Plan 09	2179 m <sup>2</sup>
BTA (Mörk)	Plan 15	52 m <sup>2</sup>
<b>BTA (Mörk): 3</b>		<b>4117 m<sup>2</sup></b>
		<b>9997 m<sup>2</sup></b>

BRA		
Antal ROK	Antal	Boarea

BOA		
Plan 10		
1 ROK	4	132 m <sup>2</sup>
2 ROK	2	82 m <sup>2</sup>
2 ROK	1	47 m <sup>2</sup>
2 ROK	1	53 m <sup>2</sup>
3 ROK	1	72 m <sup>2</sup>
3 ROK	1	73 m <sup>2</sup>
3 ROK	1	74 m <sup>2</sup>
	<b>11</b>	<b>533 m<sup>2</sup></b>

Plan 11		
1 ROK	7	231 m <sup>2</sup>
2 ROK	1	41 m <sup>2</sup>
2 ROK	1	44 m <sup>2</sup>
2 ROK	1	53 m <sup>2</sup>
3 ROK	1	64 m <sup>2</sup>
3 ROK	1	73 m <sup>2</sup>
	<b>12</b>	<b>506 m<sup>2</sup></b>

Plan 12		
1 ROK	7	231 m <sup>2</sup>
2 ROK	4	164 m <sup>2</sup>
2 ROK	2	88 m <sup>2</sup>
2 ROK	2	106 m <sup>2</sup>
3 ROK	1	64 m <sup>2</sup>
3 ROK	1	73 m <sup>2</sup>
3 ROK	1	74 m <sup>2</sup>
3 ROK	1	75 m <sup>2</sup>
	<b>19</b>	<b>875 m<sup>2</sup></b>

Plan 13		
1 ROK	7	231 m <sup>2</sup>
2 ROK	4	164 m <sup>2</sup>
2 ROK	2	88 m <sup>2</sup>
2 ROK	2	106 m <sup>2</sup>
3 ROK	1	64 m <sup>2</sup>
3 ROK	1	73 m <sup>2</sup>
3 ROK	1	74 m <sup>2</sup>
3 ROK	1	75 m <sup>2</sup>
	<b>19</b>	<b>875 m<sup>2</sup></b>

BRA		
Antal ROK	Antal	Boarea

Plan 14		
1 ROK	7	231 m <sup>2</sup>
2 ROK	4	164 m <sup>2</sup>
2 ROK	2	88 m <sup>2</sup>
2 ROK	2	106 m <sup>2</sup>
3 ROK	1	64 m <sup>2</sup>
3 ROK	1	73 m <sup>2</sup>
3 ROK	1	74 m <sup>2</sup>
3 ROK	1	75 m <sup>2</sup>
	<b>19</b>	<b>875 m<sup>2</sup></b>
<b>TOTAL BOA</b>	<b>80</b>	<b>3664 m<sup>2</sup></b>

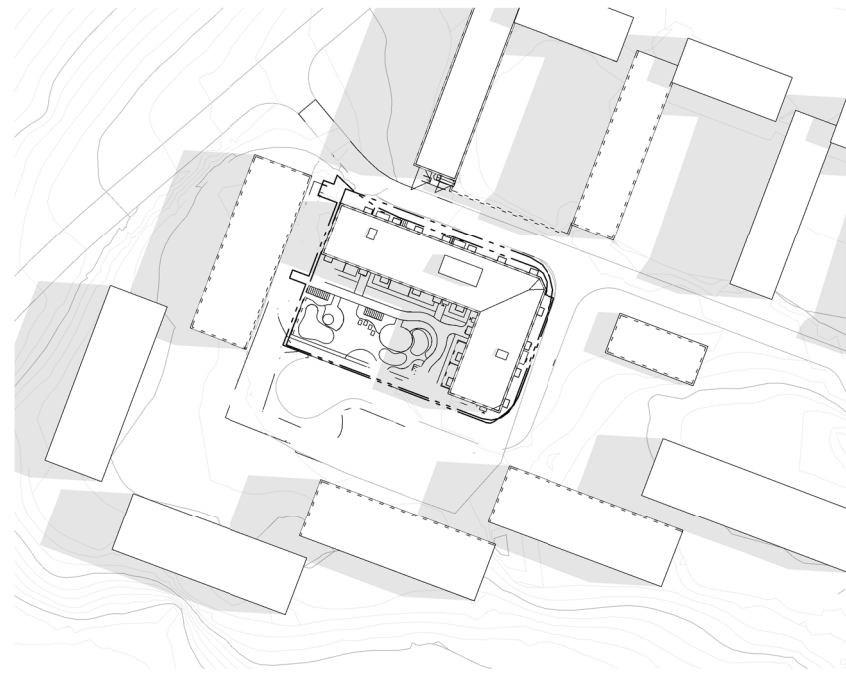
LOA		
Plan 10		
LSS-BOENDE	1	25 m <sup>2</sup>
	<b>1</b>	<b>25 m<sup>2</sup></b>

Plan 11		
LSS-BOENDE	1	432 m <sup>2</sup>
	<b>1</b>	<b>432 m<sup>2</sup></b>
<b>TOTAL LOA</b>	<b>2</b>	<b>457 m<sup>2</sup></b>
<b>TOTAL BRA</b>	<b>82</b>	<b>4121 m<sup>2</sup></b>

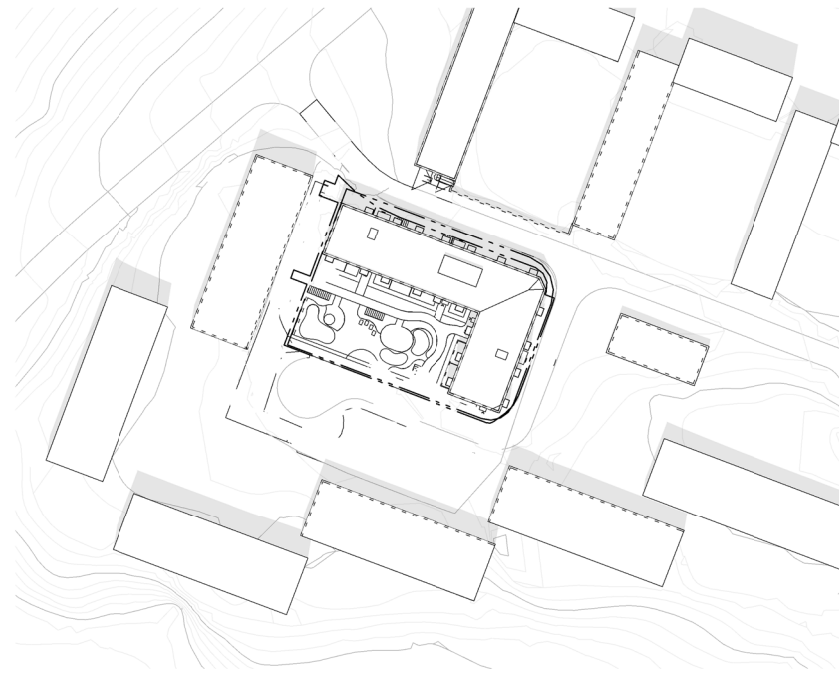
LGH FÖRDELNING ROK		
Antal ROK	Antal	Procent

1 ROK	32	29%
2 ROK	31	38%
3 ROK	17	33%
	<b>80</b>	

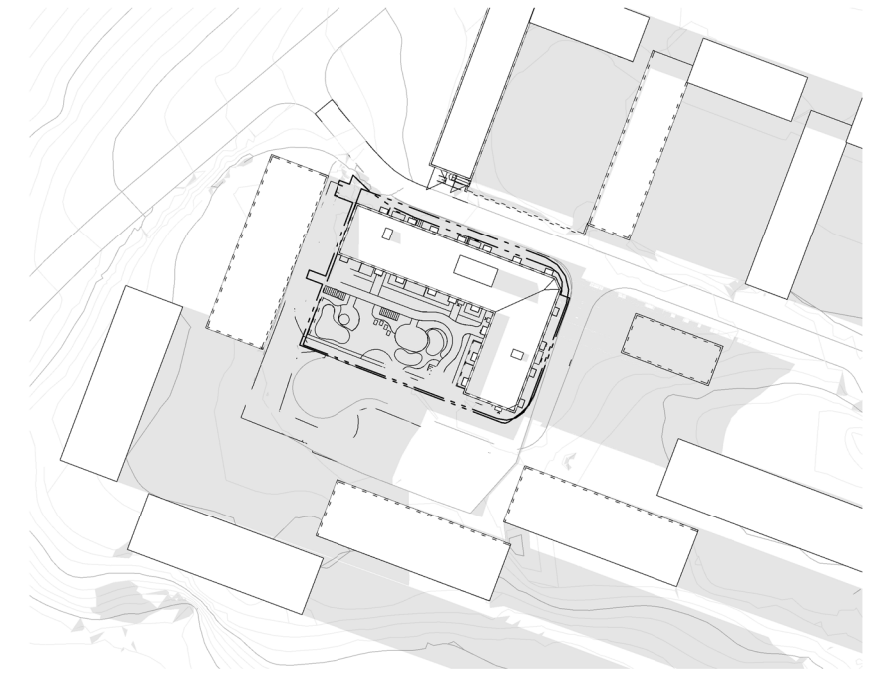
ANTAL LSS BOENDEN: 6 ST



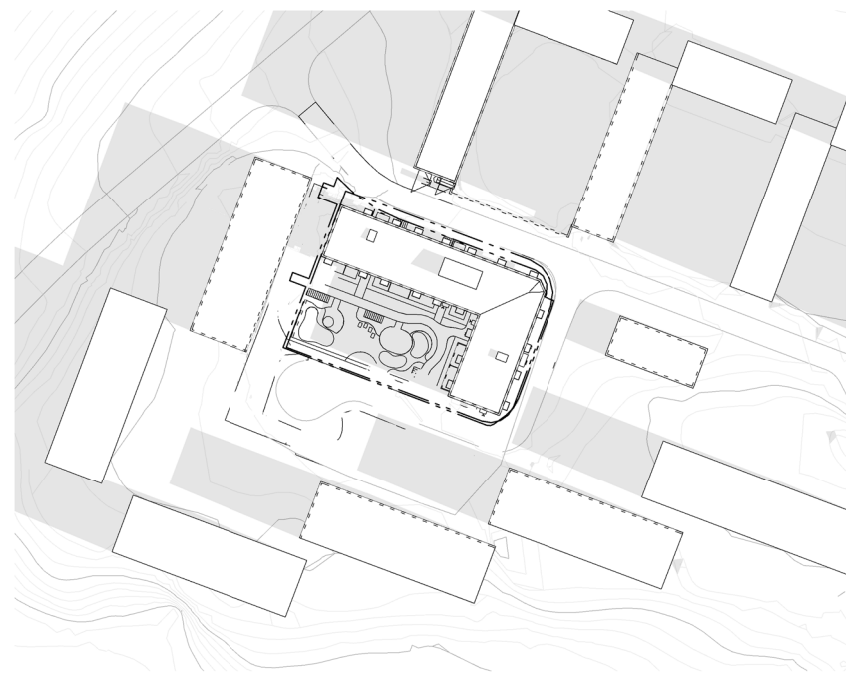
JUNI, kl 08:00



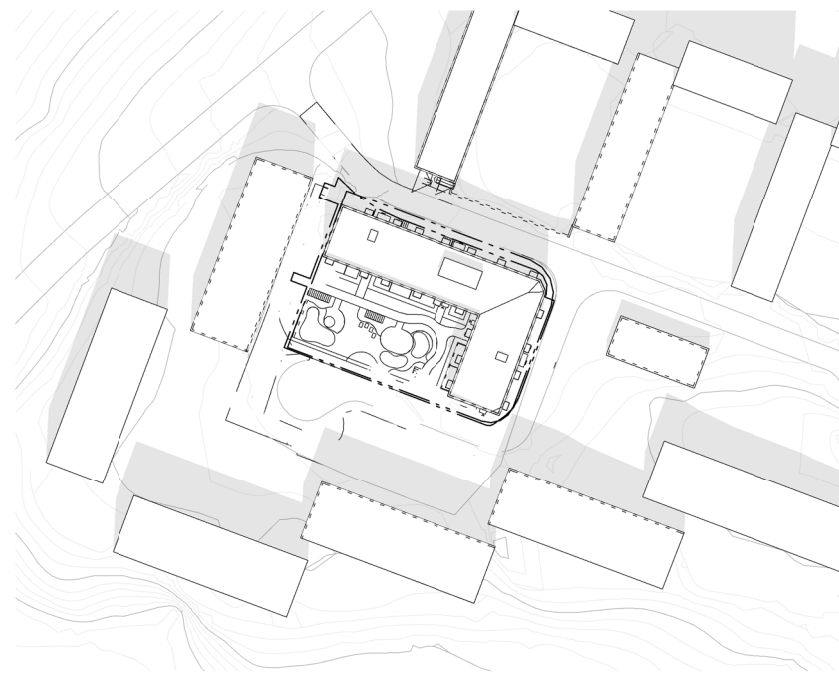
JUNI, kl 12:00



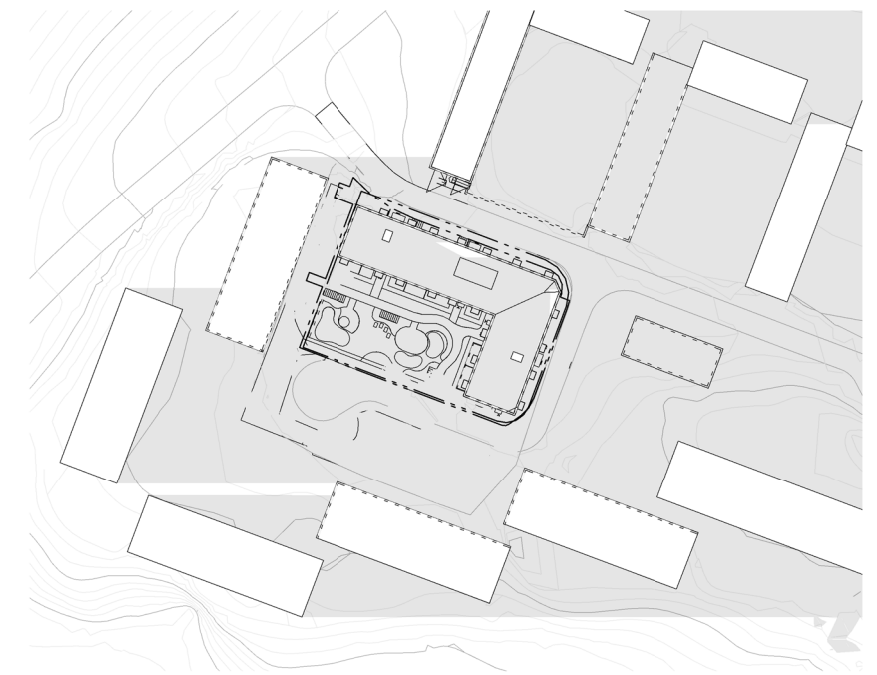
JUNI, kl 18:00



MARS/SEPTEMBER, kl 08:00



MARS/SEPTEMBER, kl 12:00



MARS/SEPTEMBER, kl 18:00

