

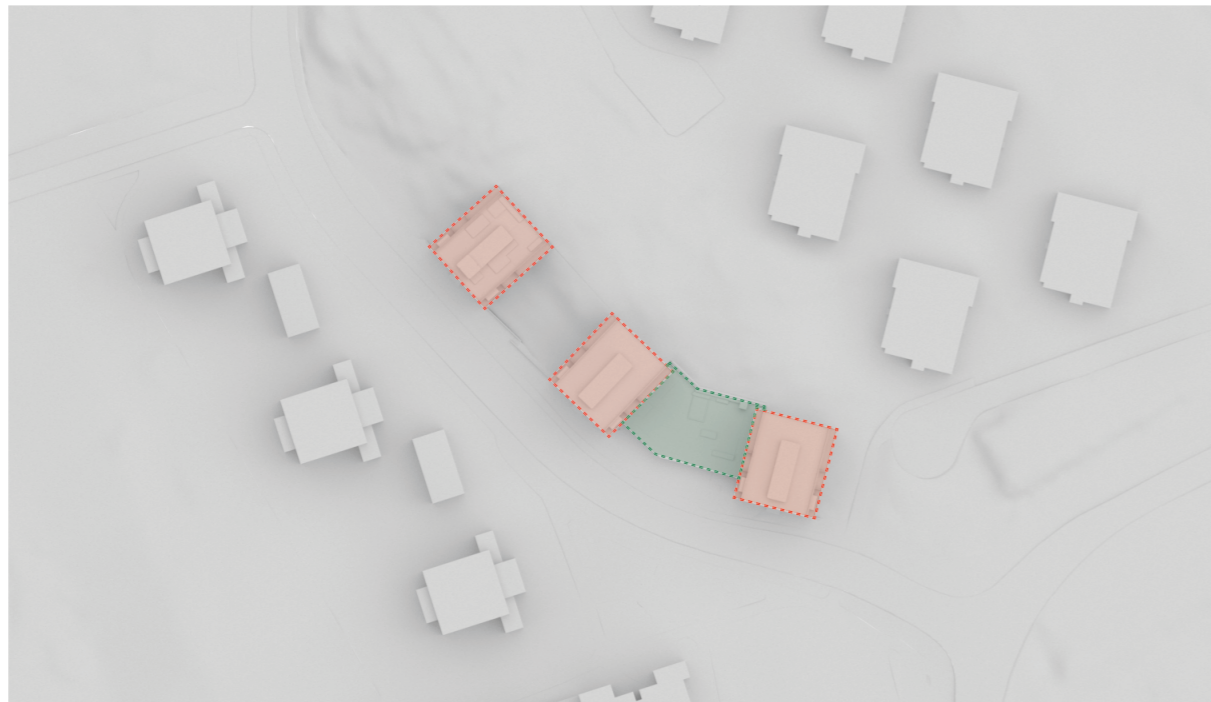
SOLBERGA
KV. TRÄTOFFELN

SOLSTUDIE
2024-07-05

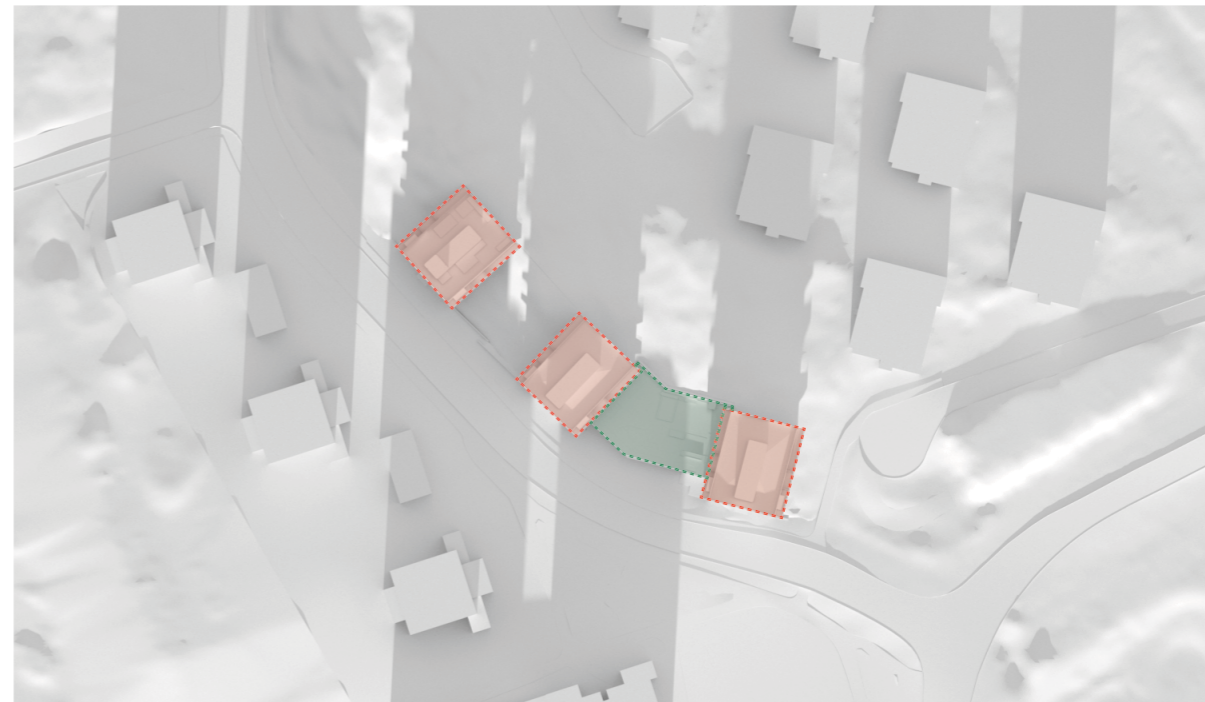
Byggaktör:
Storstaden Bostad

Arkitekt (A):
Andreas Martin-Löf Arkitekter

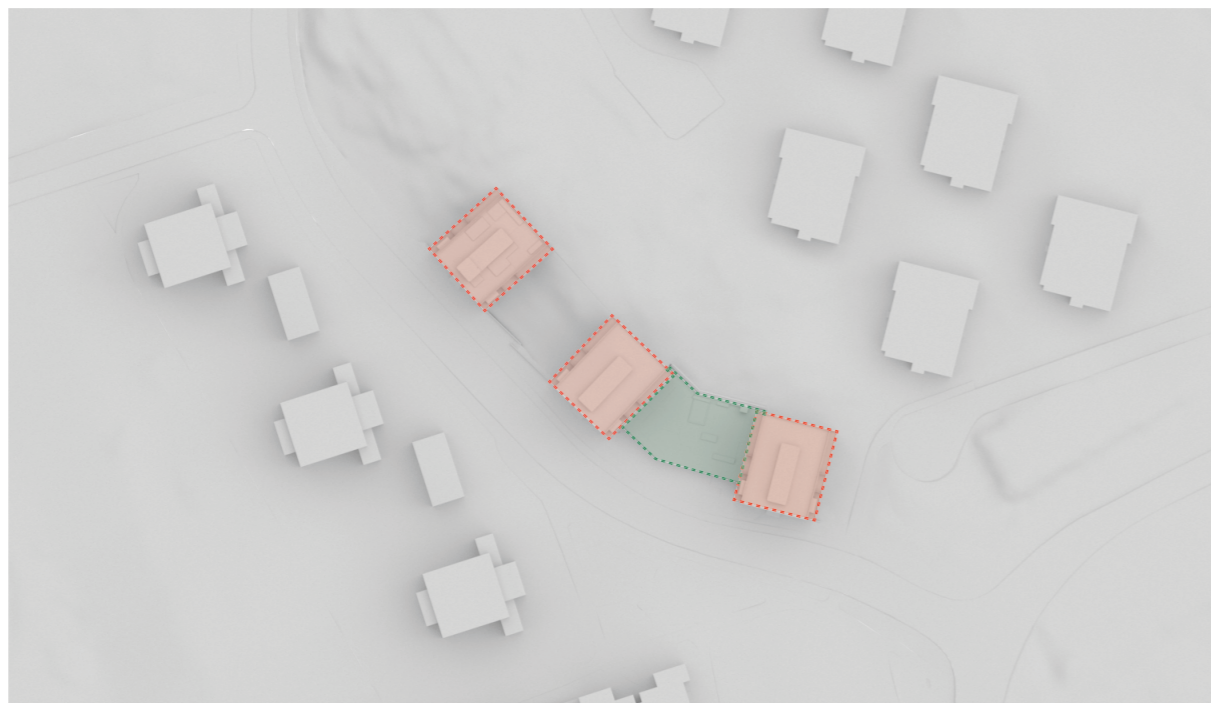
Arkitekt (L):
Landskapslaget



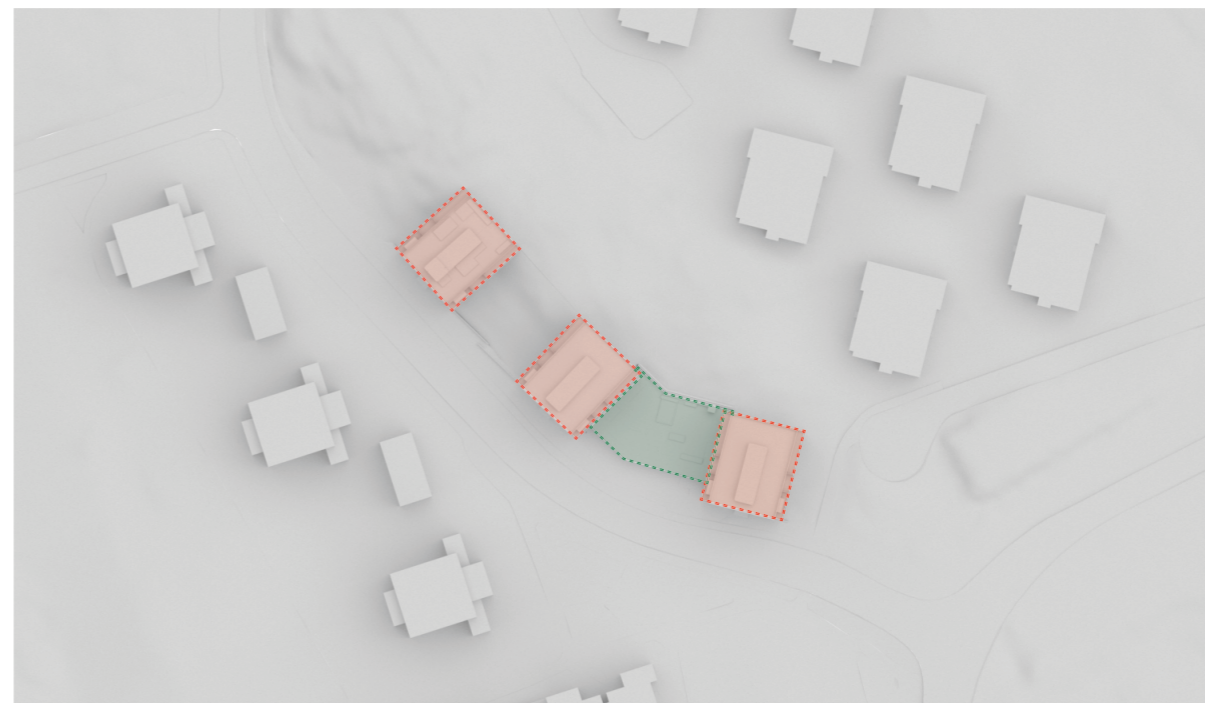
Kl 09:00
0% solbelyst gårdsyta



Kl 12:00
21% solbelyst gårdsyta

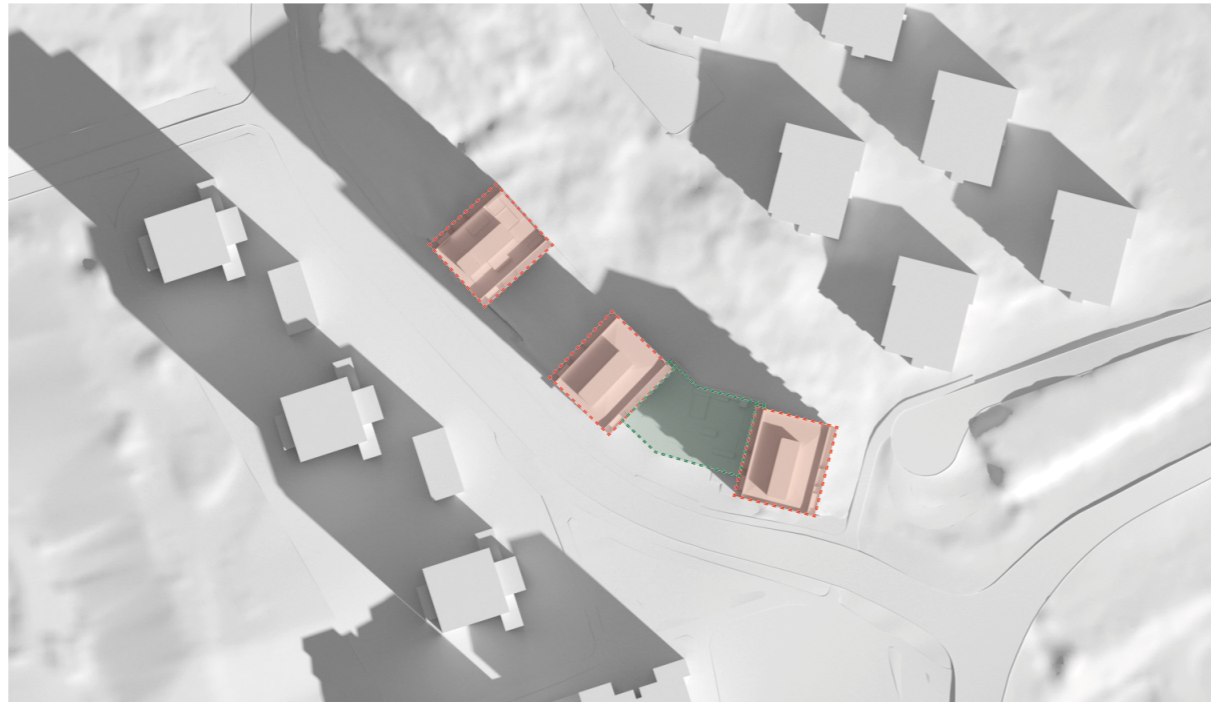


Kl 15:00
0% solbelyst gårdsyta

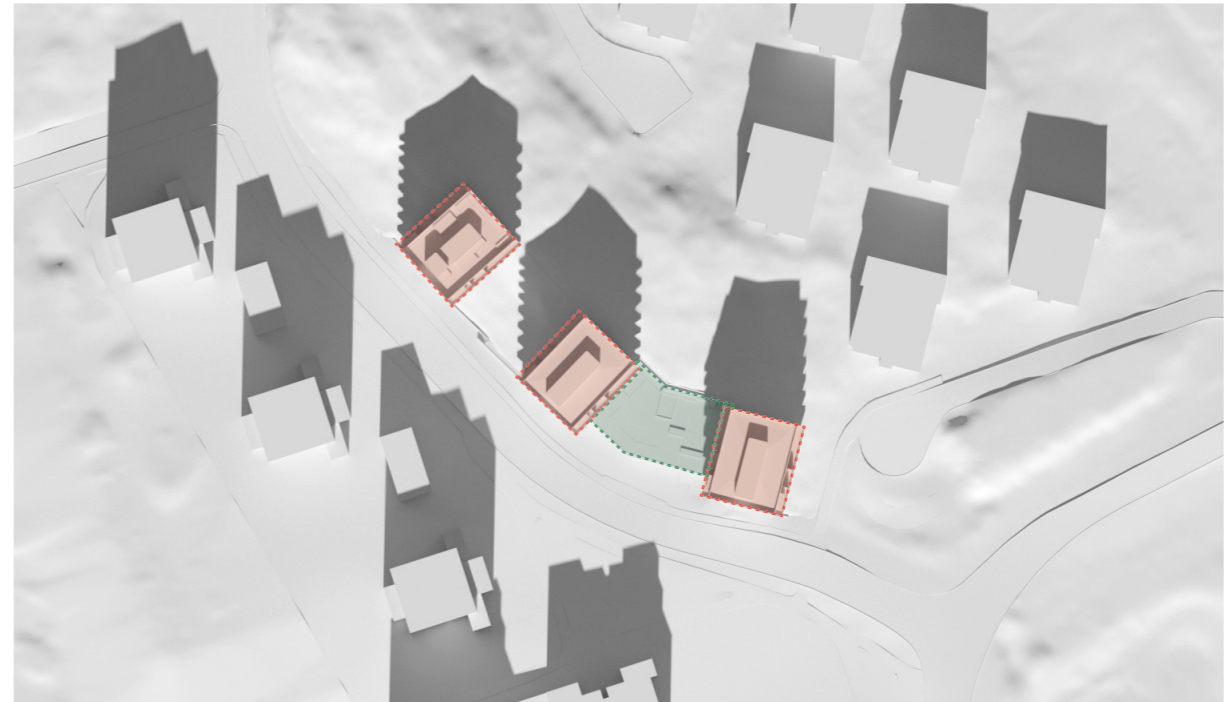


Kl 18:00
0% solbelyst gårdsyta

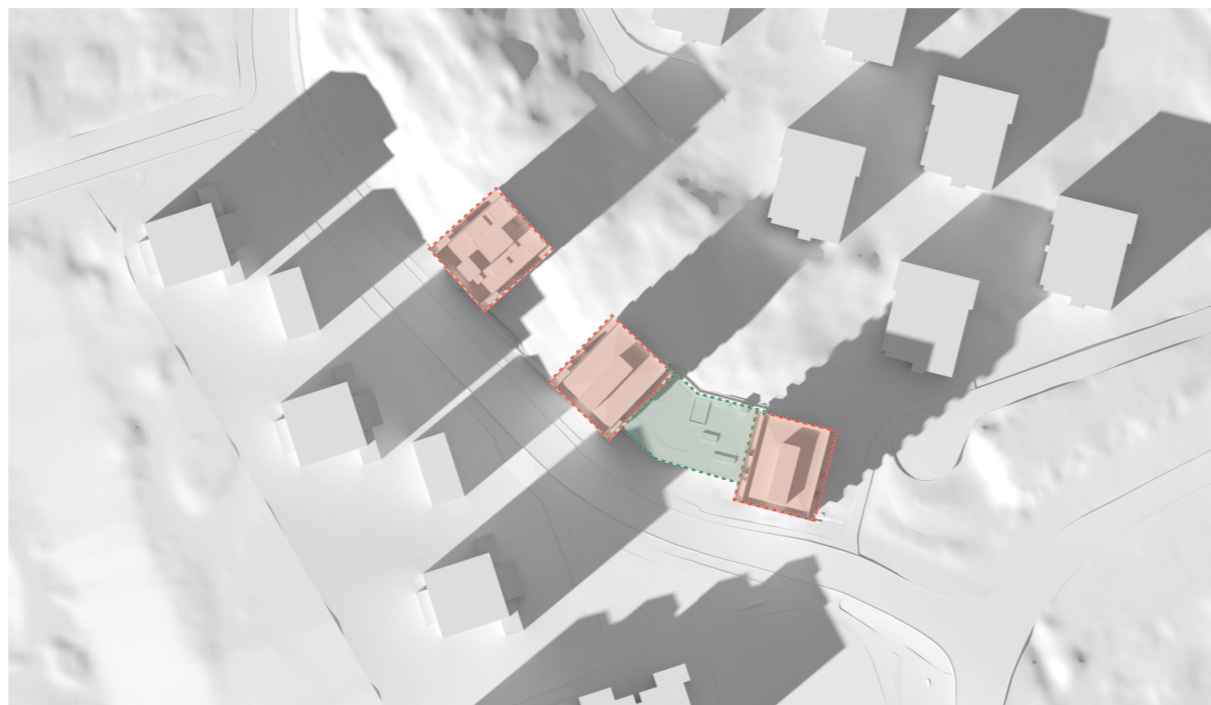




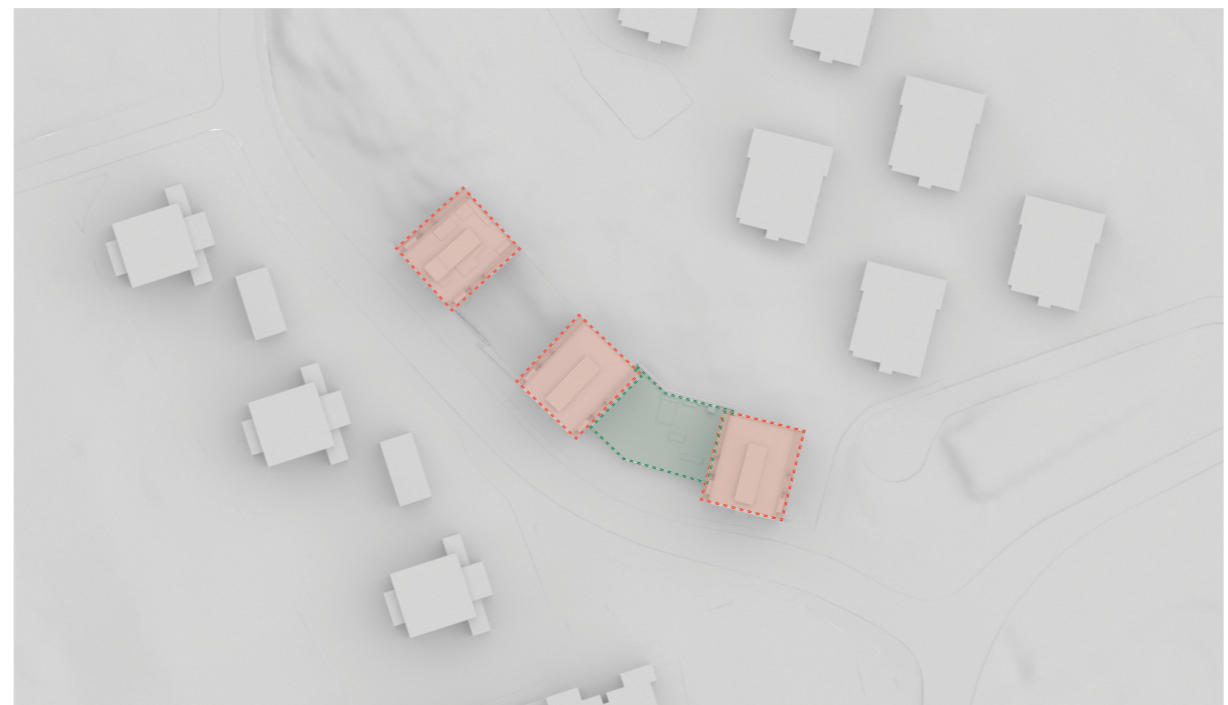
Kl 09:00
17% solbelyst gårdsyta



Kl 12:00
90% solbelyst gårdsyta

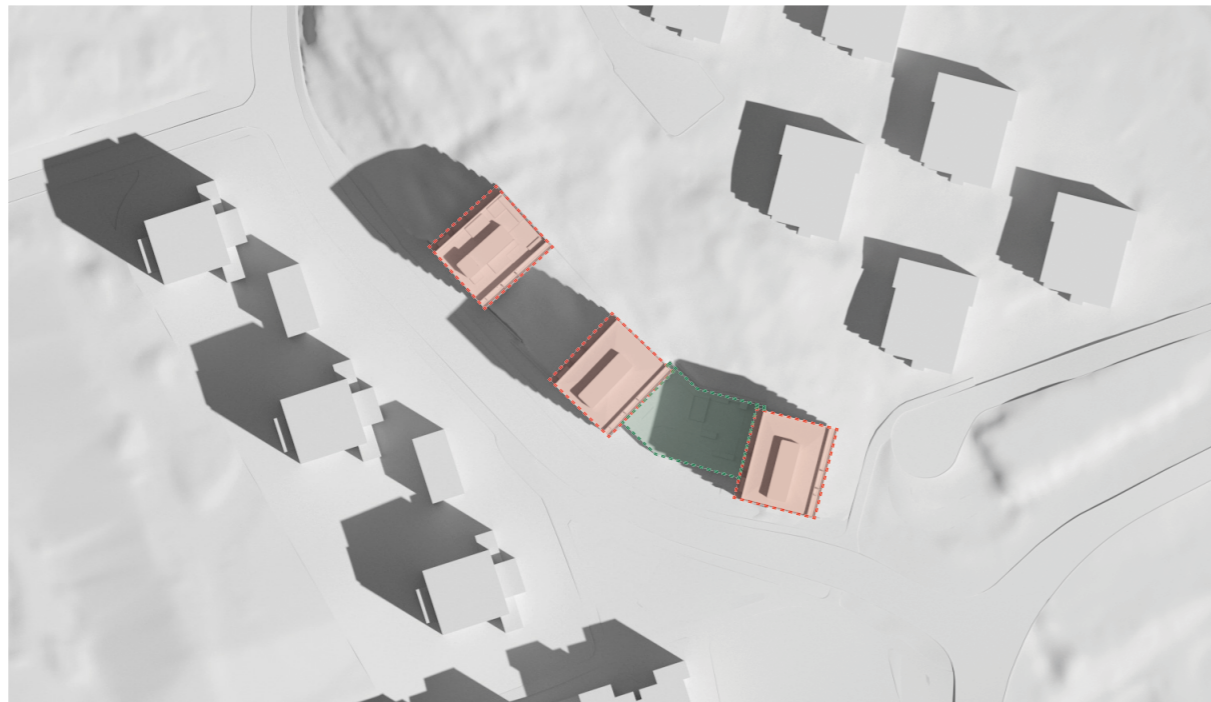


Kl 15:00
96% solbelyst gårdsyta

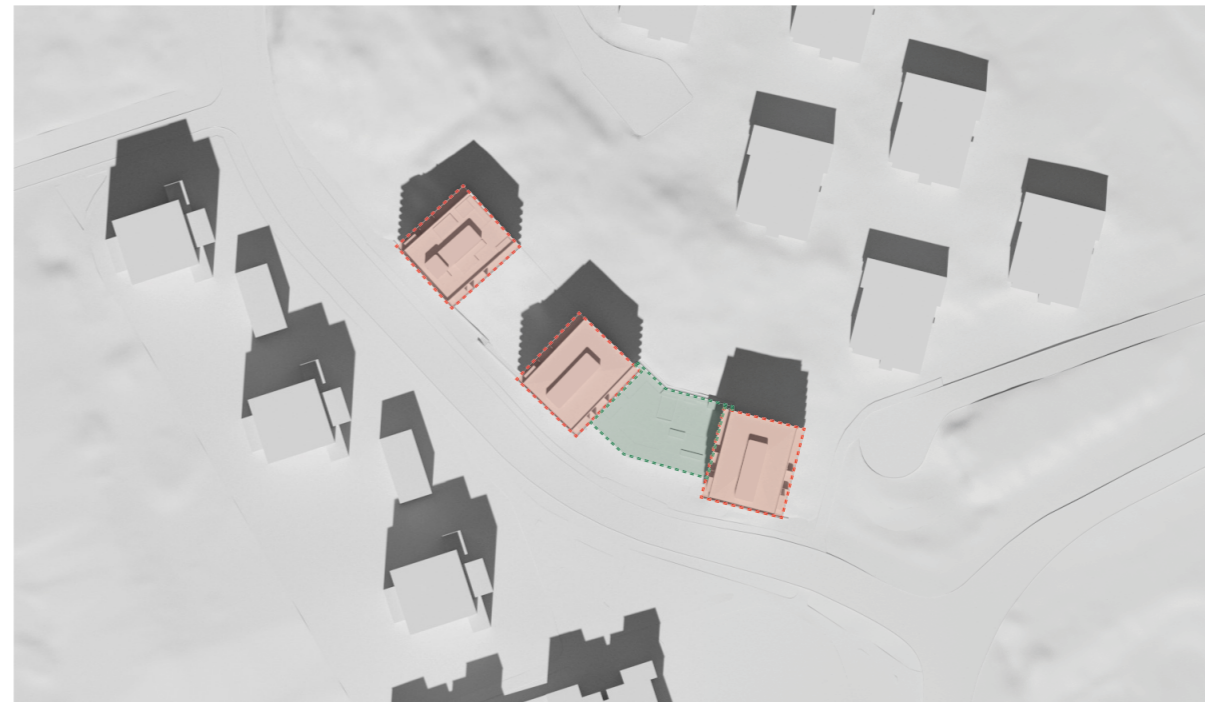


Kl 18:00
0% solbelyst gårdsyta

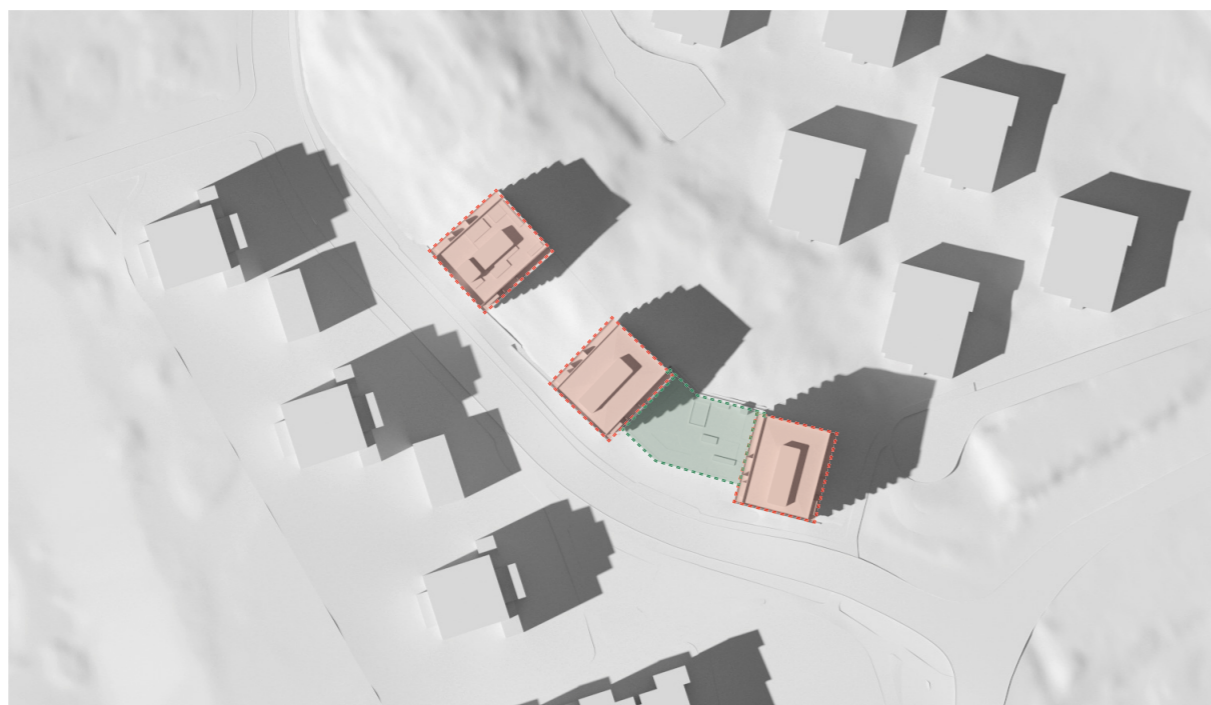




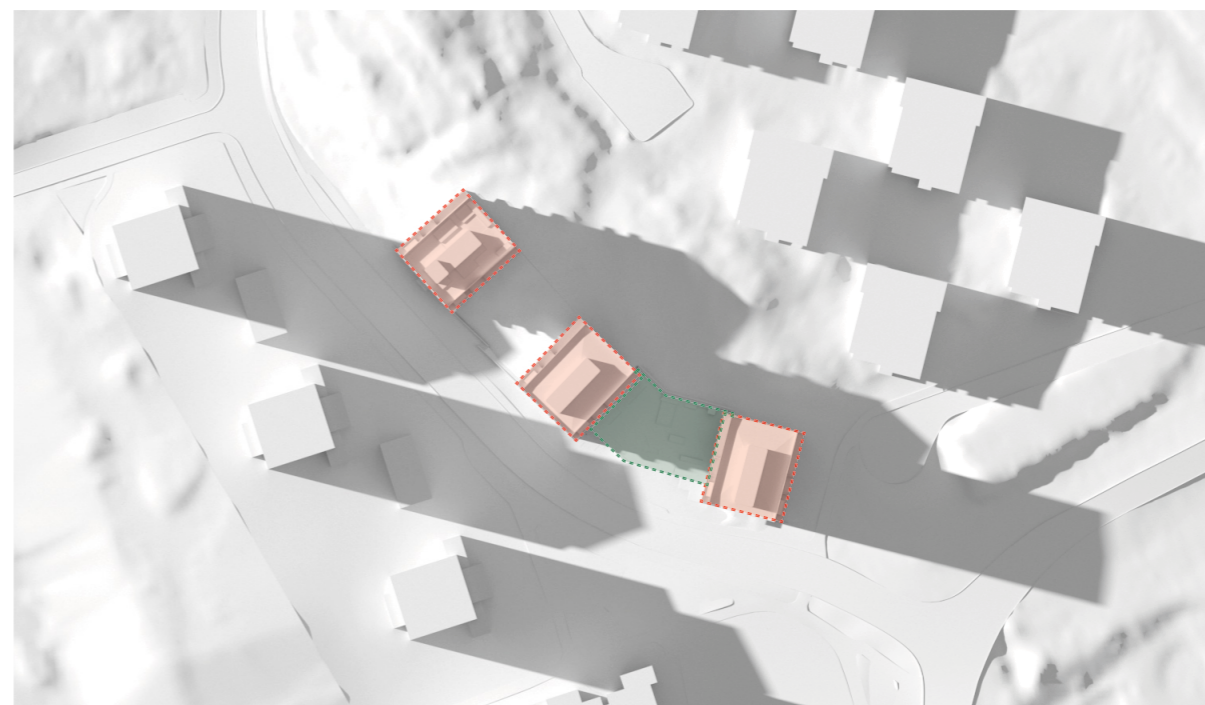
Kl 09:00
15% solbelyst gårdsyta



Kl 12:00
92% solbelyst gårdsyta



Kl 15:00
84% solbelyst gårdsyta



Kl 18:00
12% solbelyst gårdsyta



